

WORKBOOK

FALL-WINTER

2025/26







re-source BY DOLOMITE 004

MOUNTAIN PERFORMANCE FOOTWEAR.. 008

FAST HIKING 010

HIKING020

APPROACH 032

MOUNTAIN LIFESTYLE FOOTWEAR 038

CINQUANTAQUATTRO 048

MAINTENANCE & CARE 066

SPARE PARTS..... 069

TECHNOLOGIES 073

POS 086

LINE-UP..... 098

SALES NETWORK 110

re-source by DOLOMITE
IS AN IMPORTANT STEP
FOR US IN BECOMING A
RESPONSIBLE STEWARD
OF OUR PLANET AND
SOCIETY. WE LOOK
FORWARD TO IMPROVING
OUR PRACTICES IN EACH
OF THESE FIELDS.



PEOPLE

We consider that all people involved in our supply chain should be treated fairly with dignity and respect.

PLANET

We take into consideration that the earth's resources must be used in such a way that ecosystems and future generations shouldn't be adversely affected.

PRODUCTS

We aim to maximize the sustainable nature of our products while still maintaining their high level of performance through innovation, technology and design.



LEATHER WORKING GROUP - MEMBERSHIP

The Leather Working Group/LWG is a membership organisation comprised of brands, suppliers, leather manufacturers and other stakeholders within the leather manufacturing industry. The group has developed an auditing programme which certifies leather manufacturing facilities based on their environmental compliance and performance capabilities.



HIGG INDEX

We have partnered with HIGG Co, the developer of the set of sustainability tools called the HIGG Index. These tools allow us to better understand our product sustainability by looking at our production processes, material selection and production locations but also our company's sustainability activities. With the help of the HIGG Index sustainability tools, we are able to improve the impacts of our products and processes on society and the environment.

WHAT IS re-source by DOLOMITE?

re-source FOOTWEAR

RE-SOURCE BY DOLOMITE LIFESTYLE FOOTWEAR PRODUCTS ARE DEFINED BY THE USE OF RECYCLED, BIO-BASED AND / OR RENEWABLE MATERIALS CERTIFIED BY 3RD PARTIES, REPRESENTING A MINIMUM OF 40% MORE ECO-RESPONSIBLE MATERIALS BY WEIGHT



37%

of lifestyle footwear are labelled re-source by DOLOMITE



100%

of leather lifestyle footwear is made using LWG certified leather.

100%

of leather performance footwear is made using LWG certified leather.

RSI CODE OF CONDUCT



Ensuring that all people across our supply chain are treated fairly with respect and dignity is something that we and our customers value. We partnered with the Responsible Sports Initiative (RSI), a project of the World Federation of Sporting Goods Industry. The RSI uses a single code of conduct that all members adhere to.

Our code of conduct covers social and environmental topics that are important for us and for the stakeholders. The ultimate goal is to improve the social and environmental conditions under which our products are produced and distributed. We believe that it is through close collaboration with our valued partners that we will be able to move forward.

CODE OF CONDUCT POINTS:

- + No child labour
- + No forced labour
- + No discrimination
- + No abuse or harassment
- + Freedom of association and collective bargaining
- + Proper compensation and benefits
- + Proper working hours and employment
- + Assure health and safety
- + Support environmental responsible practices





LWG certified leather

The Leather Working Group/LWG promotes responsible environmental practices across the leather supply chain.



Vibram Eco-Step

Recycled rubber compound; made from a minimum of 30% recycled rubber; high-quality compound formulation; embodies Vibram's dedication to environmental conservation.



Recycled lining

The lining is made by 100% of recycled polyester.



Recycled footbed

The footbed is made of 100% recycled mesh + Mounded EVA with 20% recycled EVA grains.
The insole is completely made of 100% natural cork.



Recycled laces

Laces are made of 100% recycled PET.



Recycled midsole Eva

Midsole is made with minimum 20% of recycled compound.

MOUNTAIN PERFORMANCE FOOTWEAR

FAST HIKING

Fast hiking involves walking at a brisk pace, often requiring good cardiovascular and muscular endurance. It is suitable for individuals who seek a more intense and dynamic activity than traditional hiking but do not want to commit to a long-duration trekking experience.

HIKING

A line designed for outdoor activity lovers and for anyone who has an active and respectful relationship with the natural environment. Light, reliable, comfortable products, available in a range of different models and styles to please everyone, but all benefiting from the same Dolomite experience of the mountain environment.

APPROACH

Products suitable for approach and hiking trails, with the odd rocky section, which end where mountaineering and sport climbing activities begin. Designed to offer agility, speed, lightness and comfort: in a word, versatility.







Fast Hiking/
Winter Hiking



Comfort fit



4-5-6-7-8-9-10-11 UK



470g - Half pair



Regular insole



Waterproof



424134 NIBELIA SAXIFRAGA 2.0 HIGH

NEW

The Saxifraga 2.0 High shoes are a one-of-a-kind piece, part of Dolomite's Saxifraga project. With their unconventional design and functional features, they're the best choice to stand out when exploring urban and outdoor environments even during the coldest adventures. It perfectly combines comfort, protection and warmth thanks to the Primaloft Eco Insulation and the waterproof membrane, which keep your feet dry and warm in any weather conditions. The upper is made from a combination of stretch textile fabric and Kevlar yarns, providing enhanced protection. The sole, an original Dolomite design, features Vibram's innovative Traction Lugs, which provides grip, cushioning and improved flexibility without adding weight.

UPPER: Textile - Stretch Fabric - 3D Airmesh - Thermo Polyurethane Protection

LINING: Waterproof Membrane - Primaloft® Gold Insulation P.U.R.E.™

INSOLE: Polypropylene

MIDSOLE: Ethylene vinyl acetate (EVA) Moulded - ESS Shank

OUTSOLE: Dolomite New Hiker by Vibram® - XS-Trek compound by Vibram®

FOOTBED: Polyurethane Foam - Recycled Mesh

FEATURES: Light and protective upper, TPU protection, Supportive collar, Shock absorbing sole, Trekking shoe drop



0921 Stone Grey



PP INSOLE
> 3mm PP Insole

NEW HIKER SOLE
> EVA midsole
> ESS insert shank
> External Vibram Traction Lug design
> New Hiker Outsole Dolomite by Vibram®



DOLOMITE NEW HIKER OUTSOLE BY VIBRAM®

Rubber compound





Fast Hiking/
Winter Hiking



Comfort fit



4-5-6-7-8-9-10-11 UK



330g - Half pair



Regular insole



424131 NIBELIA SAXIFRAGA 2.0 WARM

NEW

The Saxifraga 2.0 Warm shoes are a one-of-a-kind piece, part of Dolomite's Saxifraga project. With their unconventional design and functional features, they're the best choice to stand out when exploring urban and outdoor environments even during the coldest adventures. They feature an elastic protective gaiter and Primaoft Eco insulation that guarantees warmth, protection and comfort. The upper is made from a combination of stretch textile fabric and Kevlar yarns, providing enhanced protection. The sole, an original Dolomite design, features Vibram's innovative Traction Lugs, which provides grip, cushioning and improved flexibility without adding weight.

UPPER: Textile - Stretch Fabric - Polyurethane - Thermo Polyurethane Protection

LINING: Recycled Fleece - Primaloft® Gold Insulation P.U.R.E.™

INSOLE: Ethylene vinyl acetate (EVA) Die-Cut

MIDSOLE: Ethylene vinyl acetate (EVA) Moulded - ESS Shank

OUTSOLE: Dolomite New Hiker by Vibram® - XS-Trek compound by Vibram®

FOOTBED: Polyurethane Foam - Recycled Mesh

FEATURES: Durable and protective upper, Elastic protective gaiter, TPU protection, Shock absorbing sole, Trekking shoe drop



0921 Stone Grey



PP INSOLE
> 2mm EVA Insole

NEW HIKER SOLE
> EVA midsole
> ESS insert shank
> External Vibram Traction Lug design
> New Hiker Outsole Dolomite by Vibram®



DOLOMITE NEW HIKER OUTSOLE BY VIBRAM®

Rubber compound





Fast Hiking/
Winter Hiking



Comfort fit



3.5 UK-8 UK



430g - Half pair



Regular insole



Waterproof



Wrapping System



Women's fit



423889 NIBELIA WARM HIGH WP W'S

NEW

Don't let the winter stop you!! Explore the great outdoors with our new Nibelia Warm High WP W's, our perfect choice for nature lovers, fast-hikers and casual walkers. Nibelia Warm High WP W's perfectly combines comfort, protection and warmth thanks to the Primaloft Eco Insulation and the waterproof membrane, which keep your feet dry and warm in any weather conditions. The sole, an original Dolomite design, is made with Vibram Megagrip compound and guarantees grip, cushioning and improved flexibility without adding extra weight to the footwear. This version is specifically designed with the "Perfecta" constructive system, which is specifically contoured to the shape of the female foot.

UPPER: Textile - Stretch Fabric - Polyurethane - Thermo Polyurethane Protection

LINING: Recycled Fleece - Primaloft® Gold Insulation P.U.R.E.™ - Waterproof Membrane

INSOLE: Polypropylene

MIDSOLE: Ethylene vinyl acetate (EVA) Moulded - ESS Shank

OUTSOLE: Dolomite New Hiker by Vibram® - Megagrip compound by Vibram®

FOOTBED: Polyurethane Foam - Recycled Mesh

FEATURES: Durable and protective upper, Supportive collar, TPU protection, Shock absorbing sole, Trekking shoe drop, Women's dedicated fit



0119 Black



1668 Ivory Beige/Black



PP INSOLE
> 3mm PP Insole

NEW HIKER SOLE
> EVA midsole
> ESS insert shank
> External Vibram Traction Lug design
> New Hiker Outsole Dolomite by Vibram®



DOLOMITE NEW HIKER OUTSOLE BY VIBRAM®

Rubber compound





Fast Hiking/
Winter Hiking



Comfort fit



6 UK-13.5 UK



470g - Half pair



Regular insole



Waterproof



Wrapping System



423888 NIBELIA WARM HIGH WP M'S

NEW

Don't let the winter stop you!! Explore the great outdoors with our new Nibelia Warm High WP, our perfect choice for nature lovers, fast-hikers and casual walkers. Nibelia Warm High WP perfectly combines comfort, protection and warmth thanks to the Primaloft Eco Insulation and the waterproof membrane, which keep your feet dry and warm in any weather conditions. The sole, an original Dolomite design, is made with Vibram Megagrip compound and guarantees grip, cushioning and improved flexibility without adding extra weight to the footwear.

UPPER: Textile - Stretch Fabric - Polyurethane - Thermo Polyurethane Protection

LINING: Recycled Fleece - Primaloft® Gold Insulation P.U.R.E.™ - Waterproof Membrane

INSOLE: Polypropylene

MIDSOLE: Ethylene vinyl acetate (EVA) Moulded - ESS Shank

OUTSOLE: Dolomite New Hiker by Vibram® - Megagrip compound by Vibram®

FOOTBED: Polyurethane Foam - Recycled Mesh

FEATURES: Durable and protective upper, Supportive collar, TPU protection, Shock absorbing sole, Trekking shoe drop



0119 Black



1667 Dark Green/Black



PP INSOLE
> 3mm PP Insole

NEW HIKER SOLE
> EVA midsole
> ESS insert shank
> External Vibram Traction Lug design
> New Hiker Outsole Dolomite by Vibram®



DOLOMITE NEW HIKER OUTSOLE BY VIBRAM®

Rubber compound





Fast Hiking/
Winter Hiking



Comfort fit



3.5 UK-8 UK



285g - Half pair



Regular insole



Women's fit



421123 NIBELIA WARM W'S

The Nibelia Warm W's are hiking shoes designed for fast hikers and nature enthusiasts looking to enjoy outdoor adventures during the colder months. They feature an elastic protective gaiter and Primaoft Eco insulation that guarantees warmth, protection and comfort. The sole, an original Dolomite design, features Vibram's innovative Traction Lugs, which provides grip, cushioning and improved flexibility without adding weight. Nibelia Warm W's have been designed and built around a women's specific ergonomic shape to provide enhanced, long-lasting comfort and a snug fit.

UPPER: Textile - Stretch Fabric - Polyurethane - Thermo Polyurethane Protection

LINING: Recycled Fleece - Primaloft® Gold Insulation P.U.R.E.™

INSOLE: Ethylene vinyl acetate (EVA) Die-Cut

MIDSOLE: Ethylene vinyl acetate (EVA) Moulded - ESS Shank

OUTSOLE: Dolomite New Hiker by Vibram® - XS-Trek compound by Vibram®

FOOTBED: Polyurethane Foam - Recycled Mesh

FEATURES: Durable and protective upper, Elastic protective gaiter, TPU protection, Shock absorbing sole, Trekking shoe drop, Women's dedicated fit



0124 Black/Black



1606 Mauve Pink



1670 Goat Beige/Black



PP INSOLE
> 2mm EVA Insole

NEW HIKER SOLE
> EVA midsole
> ESS insert shank
> External Vibram Traction Lug design
> New Hiker Outsole Dolomite by Vibram®



DOLOMITE NEW HIKER OUTSOLE BY VIBRAM®

Rubber compound





Fast Hiking/
Winter Hiking



Comfort fit



6 UK-13.5 UK



330g - Half pair



Regular insole



421122 NIBELIA WARM M'S

The Nibelia Warm M's are hiking shoes designed for fast hikers and nature enthusiasts looking to enjoy outdoor adventures during the colder months. They feature an elastic protective gaiter and Primaoft Eco insulation that guarantees warmth, protection and comfort. The sole, an original Dolomite design, features Vibram's innovative Traction Lugs, which provides grip, cushioning and improved flexibility without adding weight.

UPPER: Textile - Stretch Fabric - Polyurethane - Thermo Polyurethane Protection

LINING: Recycled Fleece - Primaloft® Gold Insulation P,U,R,E.™

INSOLE: Ethylene vinyl acetate (EVA) Die-Cut

MIDSOLE: Ethylene vinyl acetate (EVA) Moulded - ESS Shank

OUTSOLE: Dolomite New Hiker by Vibram® - XS-Trek compound by Vibram®

FOOTBED: Polyurethane Foam - Recycled Mesh

FEATURES: Durable and protective upper, Elastic protective gaiter, TPU protection, Shock absorbing sole, Trekking shoe drop



0124 Black/Black



0878 Olive Green



1608 Legion Blue



PP INSOLE
> 2mm EVA Insole

NEW HIKER SOLE
> EVA midsole
> ESS insert shank
> External Vibram Traction Lug design
> New Hiker Outsole Dolomite by Vibram®



DOLOMITE NEW HIKER OUTSOLE BY VIBRAM®

Rubber compound





Fast Hiking



Comfort fit



3.5 UK-8 UK



430g - Half pair



Regular insole



Dolomite
Anatomic System



Wrapping System



Women's fit



420073 NIBELIA HIGH GTX W'S

Explore the great outdoors with our new Nibelia High GTX W's, our lightest choice for nature lovers, fast-hikers and casual walkers. Nibelia High GTX perfectly combines lightness and breathability thanks to its airy construction and material selection. Comfort and protection are guaranteed by the GORE-TEX membrane, which keeps you dry in any weather conditions, and by the soft mesh collar that safely wraps your ankles. The sole, an original Dolomite design, is made with Vibram compound and guarantees grip, cushioning and improved flexibility without adding extra weight to the footwear. Nibelia High GTX W's is designed and built on a dedicated ergonomic shape for women's, to offer enhanced long-lasting comfort and a snug fit.

UPPER: Textile - Stretch Fabric - 3D Airmesh - Thermo Polyurethane Protection

LINING: GORE-TEX® Membrane

INSOLE: Polypropylene

MIDSOLE: Ethylene vinyl acetate (EVA) Moulded - ESS Shank

OUTSOLE: Dolomite New Hiker by Vibram® - XS-Trek compound by Vibram®

FOOTBED: Polyurethane Foam - Recycled Mesh

FEATURES: Light and protective upper, TPU protection, Supportive collar, Shock absorbing sole, Trekking shoe drop, Women's dedicated fit



0924 Denim Blue



1572 Goat Beige



1575 Black/Mint Green



1612 Silver Green/Sand Pink



PP INSOLE
> 3mm PP Insole



NEW HIKER SOLE
> EVA midsole
> ESS insert shank
> External Vibram Traction
Lug design
> New Hiker Outsole Dolomite
by Vibram®



**DOLOMITE NEW
HIKER OUTSOLE BY
VIBRAM®**

Rubber compound





Fast Hiking



Comfort fit



6 UK-13.5 UK



470g - Half pair



Regular insole



Dolomite
Anatomic System



Wrapping System



420072 NIBELIA HIGH GTX M'S

Explore the great outdoors with our new Nibelia High GTX M's, our lightest choice for nature lovers, fast-hikers and casual walkers. Nibelia High GTX perfectly combines lightness and breathability thanks to its airy construction and material selection. Comfort and protection are guaranteed by the GORE-TEX membrane, which keeps you dry in any weather conditions, and by the soft mesh collar that safely wraps your ankles. The sole, an original Dolomite design, is made with Vibram compound and guarantees grip, cushioning and improved flexibility without adding extra weight to the footwear.

UPPER: Textile - Stretch Fabric - 3D Airmesh - Thermo Polyurethane Protection

LINING: GORE-TEX® Membrane

INSOLE: Polypropylene

MIDSOLE: Ethylene vinyl acetate (EVA) Moulded - ESS Shank

OUTSOLE: Dolomite New Hiker by Vibram® - XS-Trek compound by Vibram®

FOOTBED: Polyurethane Foam - Recycled Mesh

FEATURES: Light and protective upper, TPU protection, Supportive collar, Shock absorbing sole, Trekking shoe drop



0119 Black



1654 Mud Green/Black



0878 Olive Green



1655 Night Blue/Mustard Yellow



PP INSOLE
> 3mm PP Insole

NEW HIKER SOLE
> EVA midsole
> ESS insert shank
> External Vibram Traction Lug design
> New Hiker Outsole Dolomite by Vibram®



DOLOMITE NEW HIKER OUTSOLE BY VIBRAM®

Rubber compound





Fast Hiking



Comfort fit



3.5 UK-8 UK



285g - Half pair



Regular insole



Dolomite Anatomic System



Wrapping System



Women's fit



420071 NIBELIA GTX W'S

Explore the great outdoors with our new Nibelia GTX W's, our lightest choice for nature lovers, fast-hikers and casual walkers. Nibelia GTX perfectly combines lightness and breathability thanks to its airy construction and material selection. Comfort and protection are guaranteed by the GORE-TEX Invisible fit membrane, which keeps you dry in any weather conditions. The sole, an original Dolomite design, is made with Vibram compound and guarantees grip, cushioning and improved flexibility without adding extra weight to the footwear. Nibelia GTX W's is designed and built on a dedicated ergonomic shape for women's, to offer enhanced long-lasting comfort and a snug fit.

UPPER: Textile - Stretch Fabric - Thermo Polyurethane Protection

LINING: GORE-TEX® Invisible Fit

INSOLE: Polypropylene

MIDSOLE: Ethylene vinyl acetate (EVA) Moulded - ESS Shank

OUTSOLE: Dolomite New Hiker by Vibram® - XS-Trek compound by Vibram®

FOOTBED: Polyurethane Foam - Recycled Mesh

FEATURES: Light and protective upper, TPU protection, Shock absorbing sole, Trekking shoe drop, Women's dedicated fit



1584 Black/Lilac Grey



0539 Mint Green



1612 Silver Green/Sand Pink



0924 Denim Blue



NEW HIKER SOLE

- > EVA midsole
- > ESS insert shank
- > External Vibram Traction Lug design
- > New Hiker Outsole Dolomite by Vibram®



DOLOMITE NEW HIKER OUTSOLE BY VIBRAM®

Rubber compound





Fast Hiking



Comfort fit



6 UK-13.5 UK



320g - Half pair



Regular insole



Dolomite
Anatomic System



Wrapping System



420070 NIBELIA GTX M'S

Explore the great outdoors with our new Nibelia GTX M's, our lightest choice for nature lovers, fast-hikers and casual walkers. Nibelia GTX perfectly combines lightness and breathability thanks to its airy construction and material selection. Comfort and protection are guaranteed by the GORE-TEX Invisible fit membrane, which keeps you dry in any weather conditions. The sole, an original Dolomite design, is made with Vibram compound and guarantees grip, cushioning and improved flexibility without adding extra weight to the footwear.

UPPER: Textile - Stretch Fabric - Thermo Polyurethane Protection

LINING: GORE-TEX® Invisible Fit

INSOLE: Polypropylene

MIDSOLE: Ethylene vinyl acetate (EVA) Moulded - ESS Shank

OUTSOLE: Dolomite New Hiker by Vibram® - XS-Trek compound by Vibram®

FOOTBED: Polyurethane Foam - Recycled Mesh

FEATURES: Light and protective upper, TPU protection, Shock absorbing sole, Trekking shoe drop



0119 Black



0878 Olive Green



1654 Mud Green/Black



1655 Night Blue/Mustard Yellow



NEW HIKER SOLE

- > EVA midsole
- > ESS insert shank
- > External Vibram Traction Lug design
- > New Hiker Outsole Dolomite by Vibram®



DOLOMITE NEW HIKER OUTSOLE BY VIBRAM®

Rubber compound



VERNALE LEATHER GTX

Meet Vernale, Dolomite's brand new range of hiking shoes. The best choice for the outdoor lovers.





GORE-TEX MEMBRANE

Waterproofness and traspirability

X-FOAM LOW DENSITY

Ammortization and propulsion

X-FOAM HARD DENSITY

Stability and anti-torsion



4-PHASE LACING SYSTEM

Comfort and excellent fit

NUBUK & SUEDE LEATHER (LWG CERTIFIED)

Feeling and protection

LUGS DESIGN

FRONT: Traction and grip

REAR: Stability and brake

VIBRAM MEGAGRIP

Ideal for all terrain conditions

DEDICATED ERGONOMIC FOOTBED

Bi-density construction for comfort and support





Hiking/
Trekking



Comfort fit



3 UK-8.5 UK



510g - Half pair



Regular insole



Dolomite
Anatomic System



Wrapping System



Women's fit



422795 VERNALE LEATHER HIGH GTX W'S

Embark on your next excursion with the Vernale High Leather GTX. Crafted from LWG certified nubuck and suede leather, this boot seamlessly combines durability with versatility, making it an ideal choice for both day-long hikes and multi-day treks. The GORE-TEX lining ensures waterproofing, while the unique Dolomite sole design integrates outstanding cushioning and propulsion. Enhanced by a Vibram compound, it provides optimal grip and traction on technical terrains.

UPPER: Nubuk Sustainable Certified - Stretch Fabric - Suede Leather - Rubber Protection

LINING: GORE-TEX® Membrane - 3D Mesh

INSOLE: Polypropylene

MIDSOLE: Ethylene vinyl acetate (EVA) Moulded

OUTSOLE: Dolomite Vernale by Vibram® - Megagrip compound by Vibram®

FOOTBED: Polyurethane Foam Recycled - Recycled Mesh

FEATURES: Durable and protective upper, Finest quality leather, Supportive collar, Shock absorbing sole, Ergonomic closure, Women's dedicated fit



0300 Dark Brown



1612 Silver Green/Sand Pink



1657 Anthracite Grey/Coral Red



0119 Black



PP INSOLE
> 3mm PP Insole



VERNALE SOLE
> EVA midsole
> TPU shank
> Dolomite Vernale Outsole by Vibram®



**DOLOMITE VERNALE
OUTSOLE BY
VIBRAM®**

Rubber compound





Hiking/
Trekking



Comfort fit



6 UK-13.5 UK



590g - Half pair



Regular insole



Dolomite
Anatomic System



Wrapping System



422794 VERNALE LEATHER HIGH GTX M'S

Embark on your next excursion with the Vernale High Leather GTX. Crafted from LWG certified nubuck and suede leather, this boot seamlessly combines durability with versatility, making it an ideal choice for both day-long hikes and multi-day treks. The GORE-TEX lining ensures waterproofing, while the unique Dolomite sole design integrates outstanding cushioning and propulsion. Enhanced by a Vibram compound, it provides optimal grip and traction on technical terrains.

UPPER: Nubuk Sustainable Certified - Stretch Fabric - Suede Leather - Rubber Protection

LINING: GORE-TEX® Membrane - 3D Mesh

INSOLE: Polypropylene

MIDSOLE: Ethylene vinyl acetate (EVA) Moulded

OUTSOLE: Dolomite Vernale by Vibram® - Megagrip compound by Vibram®

FOOTBED: Polyurethane Foam Recycled - Recycled Mesh

FEATURES: Durable and protective upper, Finest quality leather, Supportive collar, Shock absorbing sole, Ergonomic closure



0300 Dark Brown



0937 Anthracite Grey



1656 Deep Green/Electric Orange



0119 Black



PP INSOLE
> 3mm PP Insole



VERNALE SOLE
> EVA midsole
> TPU shank
> Dolomite Vernale Outsole by Vibram®



**DOLOMITE VERNALE
OUTSOLE BY
VIBRAM®**

Rubber compound





Hiking/
Trekking



Comfort fit



3 UK-8.5 UK



480g - Half pair



Regular insole



Dolomite
Anatomic System



Wrapping System



Women's fit



422797 VERNALE HIGH GTX W'S

Embark on your upcoming adventure with the Vernale High GTX. Made from lightweight and technical textiles, these shoes seamlessly blend durability with versatility, making them ideal for both day-long hikes and multi-day treks. The GORE-TEX lining ensures waterproofing, while the unique Dolomite sole design incorporates outstanding cushioning and propulsion. Enhanced by a Vibram compound, it provides optimal grip and traction on technical terrains.

UPPER: Textile - Stretch Fabric - Thermo Polyurethane Overlay

LINING: GORE-TEX® Membrane - 3D Mesh

INSOLE: Polypropylene

MIDSOLE: Ethylene vinyl acetate (EVA) Moulded

OUTSOLE: Dolomite Vernale by Vibram® - XS-Trek compound by Vibram®

FOOTBED: Polyurethane Foam Recycled - Recycled Mesh

FEATURES: Light and protective upper, Supportive collar, Shock absorbing sole, Ergonomic closure, Women's dedicated fit



1605 Gunmetal Grey/Black



1644 Storm Blue



PP INSOLE
> 3mm PP Insole



VERNALE SOLE
> EVA midsole
> TPU shank
> Dolomite Vernale Outsole by Vibram®



**DOLOMITE VERNALE
OUTSOLE BY
VIBRAM®**

Rubber compound





Hiking/
Trekking



Comfort fit



6 UK-13.5 UK



560g - Half pair



Regular insole



Dolomite
Anatomic System



Wrapping System



422796 VERNALE HIGH GTX M'S

Embark on your upcoming adventure with the Vernale High GTX. Made from lightweight and technical textiles, these shoes seamlessly blend durability with versatility, making them ideal for both day-long hikes and multi-day treks. The GORE-TEX lining ensures waterproofing, while the unique Dolomite sole design incorporates outstanding cushioning and propulsion. Enhanced by a Vibram compound, it provides optimal grip and traction on technical terrains.

UPPER: Textile - Stretch Fabric - Thermo Polyurethane Overlay

LINING: GORE-TEX® Membrane - 3D Mesh

INSOLE: Polypropylene

MIDSOLE: Ethylene vinyl acetate (EVA) Moulded

OUTSOLE: Dolomite Vernale by Vibram® - XS-Trek compound by Vibram®

FOOTBED: Polyurethane Foam Recycled - Recycled Mesh

FEATURES: Light and protective upper, Supportive collar, Shock absorbing sole, Ergonomic closure



1655 Night Blue/Mustard Yellow



1658 Night Green/Black



1659 Black/Anthracite Grey



PP INSOLE
> 3mm PP Insole



VERNALE SOLE
> EVA midsole
> TPU shank
> Dolomite Vernale Outsole by Vibram®



**DOLOMITE VERNALE
OUTSOLE BY
VIBRAM®**

Rubber compound





Winter hiking/
Snow Shoeing



Comfort fit



3 UK-8 UK



525g - Half pair



Medium insole



Dolomite
Anatomic System



Waterproof



417049 TAMASKAN 2.0 W'S

Ideal for winter trekking, snowshoe excursions and other winter leisure activities, the new Tamaskan 2.0 are the best means to enjoy outdoor during winter. The boot is fully shield from the outside thanks to its protective gaiters, specifically designed to shed any snow accumulation. The original peaks pattern of the gaiters characterizing the boot, are reflective, ensuring greater visibility in low light environment. The Primaloft eco insulation, 100% recycled and GRS certified, provides warmth and durable comfort during the activities. Finally, the distinctive Vibram outsole is made with Arctic Grip technology compound, to guarantee the maximum grip on any wet and cold surfaces - snow, ice and even wet ice. An original sportive-looking boot, a real must have for winter outdoor lovers.

UPPER: Polyurethane Coated - Stretch Fabric - Fabric - Rubber Protection

LINING: Primaloft® Gold Insulation P,U,R,E.™ - Fleece - Waterproof Membrane

INSOLE: Texon

MIDSOLE: Ethylene vinyl acetate (EVA) Moulded

OUTSOLE: Ghiaccio Vibram® - Arctic Grip Technology Compound

FOOTBED: Ethylene vinyl acetate (EVA) Moulded - Fleece - Aluminium Foil

FEATURES: Durable and protective upper, Elastic protective gaiter, Supportive collar, Thermal insulation, Fast lace system

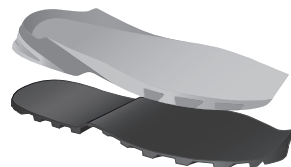


1526 Foggy White/Black



GHIACCIO OUSOLE BY VIBRAM®

Rubber compound:



GHIACCIO SOLE

- > Eva Midsole
- > Ghiaccio Outsole by Vibram®



Winter hiking/
Snow Shoeing



Comfort fit



3 UK-12 UK



585g - Half pair



Medium insole



Dolomite
Anatomic System



Waterproof



418186 TAMASKAN 2.0

Ideal for winter trekking, snowshoe excursions and other winter leisure activities, the new Tamaskan 2.0 are the best means to enjoy outdoor during winter time. The boot is fully shield from the outside thanks to its protective gaiters, specifically designed to shed any snow accumulation. The original peaks pattern of the gaiters characterizing the boot, are reflective, ensuring greater visibility in low light environment. The Primaloft eco insulation, 100% recycled and GRS certified, provides warmth and durable comfort during the activities. Finally, the distinctive Vibram outsole is made with Arctic Grip technology compound, to guarantee the maximum grip on any wet and cold surfaces - snow, ice and even wet ice. An original sportive-looking boot, a real must have for winter outdoor lovers.

UPPER: Polyurethane Coated - Stretch Fabric - Fabric - Rubber Protection

LINING: Primaloft® Gold Insulation P,U,R,E.™ - Fleece - Waterproof Membrane

INSOLE: Texon

MIDSOLE: Ethylene vinyl acetate (EVA) Moulded

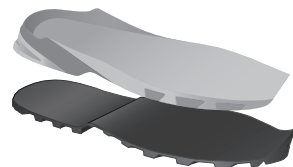
OUTSOLE: Ghiaccio Vibram® - Arctic Grip Technology Compound

FOOTBED: Ethylene vinyl acetate (EVA) Moulded - Fleece - Aluminium Foil

FEATURES: Durable and protective upper, Elastic protective gaiter, Supportive collar, Thermal insulation, Fast lace system



0119 Black



GHIACCIO SOLE

- > Eva Midsole
- > Ghiaccio Outsole by Vibram®



GHIACCIO OUSOLE BY VIBRAM®

Rubber compound:





Hiking



Regular fit



3.5 UK-8.5 UK



485g - Half pair



Medium insole



Dolomite Anatomic System



Wrapping System



Resolable shoe



Women's fit



289209 54 HIKE EVO GTX W'S

Blending together the aesthetic of the iconic Cinquantaquattro with a full package of materials and constructive solutions of a pure hiking shoe, the 54 Hike Evo GTX for women is a one-of-a-kind hiking boot, which represents the more tangible expression of the link between functionality, performance, style and all-Italian design. Perfect for outdoor activities, such as trekking and light hiking, it boasts a suede leather and stretch fabric upper, with an innovative wrapping tongue construction that offers even more comfort to the foot allowing it to move naturally. It also sports a waterproof GORE-TEX lining and an enduring Adula Vibram® sole, which guarantees not only durability, but also comfort and the maximum grip on mixed terrains and variable gradients. 54 Hike Evo GTX for women is made with Perfecta system, an ergonomic last specifically made for women's foot. A true multitasker boot, the perfect mean to enjoy fresh air on a mountain trails

UPPER: Suede Leather - Stretch Fabric - Rubber Protection

LINING: GORE-TEX® Membrane - Full Grain Leather

INSOLE: Thermomoulded Polypropylene 65D

MIDSOLE: Microporous Die Cut

OUTSOLE: Adula Vibram® - XS-Trek compound by Vibram®

FOOTBED: Ethylene vinyl acetate (EVA) Moulded - Mesh

FEATURES: Durable and protective upper, Finest quality leather, Supportive collar, Women's dedicated fit, Ergonomic closure, Certified leather by LWG, GORE-TEX with ePE membrane PFC-Free with a reduced carbon footprint, Resolable Shoes



1076 Gunmetal Grey



1341 Dusty Purple



1518 Paprika Red



PP INSOLE

> 3mm PP Injection Insole



ADULA SOLE

> 2 Density Eva Die Cut Midsole
> Adula Outsole by Vibram®



ADULA OUSOLE BY VIBRAM®

Rubber compound:





Hiking



Regular fit



6 UK-12.5 UK



575g - Half pair



Medium insole



Dolomite
Anatomic System



Wrapping System



Resolable shoe



289207 54 HIKE EVO GTX M'S

Blending together the aesthetic of the iconic Cinquantaquattro with a full package of materials and constructive solutions of a pure hiking shoe, the 54 Hike Evo GTX is a one-of-a-kind hiking boot, which represents the more tangible expression of the link between functionality, performance, style and all-Italian design. Perfect for outdoor activities, such as trekking and light hiking, it boasts a suede leather and stretch fabric upper, with an innovative wrapping tongue construction that offers even more comfort to the foot allowing it to move naturally. It also sports a waterproof GORE-TEX lining and an enduring Adula Vibram® sole, which guarantees not only durability, but also comfort and the maximum grip on mixed terrains and variable gradients.

UPPER: Suede Leather - Stretch Fabric - Rubber Protection

LINING: GORE-TEX® Membrane - Full Grain Leather

INSOLE: Thermomoulded Polypropylene 65D

MIDSOLE: Microporous Die Cut

OUTSOLE: Adula Vibram® - XS-Trek compound by Vibram®

FOOTBED: Ethylene vinyl acetate (EVA) Moulded - Mesh

FEATURES: Durable and protective upper, Finest quality leather, Supportive collar, Ergonomic closure, Certified leather by LWG, GORE-TEX with ePE membrane PFC-Free with a reduced carbon footprint, Resolable Shoes



0878 Olive Green



0922 Golden Yellow



1076 Gunmetal Grey



PP INSOLE

> 3mm PP Injection Insole



ADULA SOLE

> 2 Density Eva Die Cut
Midsole
> Adula Outsole by Vibram®



ADULA OUSOLE BY VIBRAM®

Rubber compound:





Hiking



Regular fit



3.5 UK-8.5 UK



325g - Half pair



Medium insole



Dolomite Anatomic System



Wrapping System



Resolable shoe



Women's fit



289210 54 HIKE LOW EVO GTX W'S

Blending together the aesthetic of the iconic Cinquantaquattro with a full package of materials and constructive solutions of a pure hiking shoe, the 54 Hike Evo GTX Low for women is a one-of-a-kind hiking boot, which represents the more tangible expression of the link between functionality, performance, style and all-Italian design. Perfect for outdoor activities, such as trekking and light hiking, it boasts a suede leather and stretch fabric upper, with an innovative wrapping tongue construction that offers even more comfort to the foot allowing it to move naturally. It also sports a waterproof GORE-TEX lining and an enduring Adula Vibram® sole, which guarantees not only durability, but also comfort and the maximum grip on mixed terrains and variable gradients. 54 Hike Evo GTX for women is made with Perfecta system, an ergonomic last specifically made for women's foot. A true multitasker boot, the perfect mean to enjoy fresh air on a mountain trails

UPPER: Suede Leather - Stretch Fabric - Rubber Protection

LINING: GORE-TEX® Membrane - Full Grain Leather

INSOLE: Thermomoulded Polypropylene 55D

MIDSOLE: Microporous Die Cut

OUTSOLE: Predator II Vibram® - XS-Trek compound by Vibram®

FOOTBED: Ethylene vinyl acetate (EVA) Moulded - Mesh

FEATURES: Durable and protective upper, Finest quality leather, Women's dedicated fit, Ergonomic closure, Certified leather by LWG, Resolable Shoes, GORE-TEX with ePE membrane PFC-Free with a reduced carbon footprint



1076 Gunmetal Grey



1341 Dusty Purple



1518 Paprika Red



PP INSOLE

> 3mm PP Injection Insole



PREDATOR II SOLE

> 2 Density Eva Die Cut Midsole
> Predator II Outsole by Vibram®



PREDATOR II OUTSOLE BY VIBRAM®

Rubber compound:





Hiking



Regular fit



6 UK-12.5 UK



425g - Half pair



Medium insole



Dolomite
Anatomic System



Wrapping System



Resolable shoe



289208 54 HIKE LOW EVO GTX M'S

Blending together the aesthetic of the iconic Cinquantaquattro with a full package of materials and constructive solutions of a pure hiking shoe, the 54 Hike Low Evo GTX is a one-of-a-kind hiking boot, which represents the more tangible expression of the link between functionality, performance, style and all-Italian design. Perfect for outdoor activities, such as trekking and light hiking, it boasts a suede leather and stretch fabric upper, with an innovative wrapping tongue construction that offers even more comfort to the foot allowing it to move naturally. It also sports a waterproof GORE-TEX lining and an enduring Predator II Vibram® sole, which guarantees not only durability, but also comfort and the maximum grip on mixed terrains and variable gradients. A true multitasker boot, the perfect mean to enjoy fresh air on a mountain trails.

UPPER: Suede Leather - Stretch Fabric - Rubber Protection

LINING: GORE-TEX® Membrane - Full Grain Leather

INSOLE: Thermomoulded Polypropylene 55D

MIDSOLE: Microporous Die Cut

OUTSOLE: Predator II Vibram® - XS-Trek compound by Vibram®

FOOTBED: Ethylene vinyl acetate (EVA) Moulded - Mesh

FEATURES: Durable and protective upper, Finest quality leather, Ergonomic closure, Certified leather by LWG, GORE-TEX with ePE membrane PFC-Free with a reduced carbon footprint, Resolable Shoes



0878 Olive Green



0922 Golden Yellow



1076 Gunmetal Grey



PP INSOLE

> 3mm PP Injection Insole



PREDATOR II SOLE

> 2 Density Eva Die Cut
Midsole
> Predator II Outsole by
Vibram®



PREDATOR II OUTSOLE BY VIBRAM®

Rubber compound:





Approach /
Hiking



Precise fit



4 UK-8 UK



430g - Half pair



Medium insole



Dolomite
Anatomic System



Wrapping System



421121 CRODAROSSA LEATHER HIGH GTX W'S

Crodarossa Leather High GTX are designed for mountain approaches, technical treks and via ferratas. Crafted from LWG-certified suede leather and stretch fabric tongue, this boot features a GORE-TEX waterproof membrane for total protection from the elements. The sole is designed to adapt 360° to the wearer's foot for comfort and stability on all types of terrain. The heel has soft EVA for cushioning and shock absorption, while the front is stiffer with a toe climbing zone for precision and support on ledges and cracks. The Vibram XS-Trek outsole with pronounced lugs improves traction on descents and grip on climbs.

UPPER: Suede Leather - Stretch Fabric - Rubber Protection

LINING: GORE-TEX® Membrane - Recycled Mesh

INSOLE: Polypropylene

MIDSOLE: Ethylene vinyl acetate (EVA) Bi-Density

OUTSOLE: Vibram® by Dolomite Approach Tech - XS-Trek compound by Vibram®

FOOTBED: Polyurethane Foam - Recycled Mesh

FEATURES: Durable and protective upper, Full length lacing, Supportive collar, Shock absorbing sole, Certified leather by LWG



0924 Denim Blue



0848 Taupe Beige



PP INSOLE

> 3mm PP Injection Insole



APPROACH TECH SOLE

> 2 Moulded Bi-density Eva midsole
> Dolomite Approach Tech outsole by Vibram



DOLOMITE APPROACH TECH OUTSOLE BY VIBRAM®

Rubber compound:





Approach /
Hiking



Precise fit



4 UK-8 UK



510g - Half pair



Medium insole



Dolomite
Anatomic System



Wrapping System



421120 CRODAROSSA LEATHER HIGH GTX M'S

Crodarossa Leather High GTX M's are designed for mountain approaches, technical treks and via ferratas. Crafted from LWG-certified suede leather and stretch fabric tongue, this boot features a GORE-TEX waterproof membrane for total protection from the elements. The sole is designed to adapt 360° to the wearer's foot for comfort and stability on all types of terrain. The heel has soft EVA for cushioning and shock absorption, while the front is stiffer with a toe climbing zone for precision and support on ledges and cracks. The Vibram XS-Trek outsole with pronounced lugs improves traction on descents and grip on climbs.

UPPER: Suede Leather - Stretch Fabric - Rubber Protection

LINING: GORE-TEX® Membrane - Recycled Mesh

INSOLE: Polypropylene

MIDSOLE: Ethylene vinyl acetate (EVA) Bi-Density

OUTSOLE: Vibram® by Dolomite Approach Tech - XS-Trek compound by Vibram®

FOOTBED: Polyurethane Foam - Recycled Mesh

FEATURES: Durable and protective upper, Full length lacing, Supportive collar, Shock absorbing sole, Certified leather by LWG



0193 Brown



1607 Iron Grey/Black



1608 Legion Blue



PP INSOLE

> 3mm PP Injection Insole



APPROACH TECH SOLE

> 2 Moulded Bi-density Eva midsole
> Dolomite Approach Tech outsole by Vibram



DOLOMITE APPROACH TECH OUTSOLE BY VIBRAM®

Rubber compound:





Approach /
Hiking



Precise fit



4 UK-8 UK



368 g - Half pair



Medium insole



Dolomite
Anatomic System



Wrapping System



420067 CRODAROSSA LEATHER GTX W'S

The Crodarossa Leather GTX is a lightweight mountain approach shoe, meant for those who look for the maximum freedom of movement while hiking or accessing climbing walls. The upper is made of suede leather, with e-foam details on the toe-box and heel to guarantee protection. The sole of Crodarossa is designed to guarantee a 360° adaptability to wearer's feet, providing comfort and stability in every kind of terrain. The heel area is built with softer EVA, guaranteeing great cushioning and protection from impacts. Conversely, the front area is stiffer and integrates a toe climbing zone, providing precision and supporting the wearer's weight on small ledges and cracks, without folding over. The Outsole, made with Vibram Megagrip rubber compound, it's built with pronounced heel and lugs, improving breaking on descents and grip on climbs. Waterproofness and breathability are guaranteed by GORE-TEX lining.

UPPER: Suede Leather - Stretch Fabric - E-Foam Protection

LINING: GORE-TEX Membrane - 3D Airmesh

INSOLE: Polypropylene

MIDSOLE: Ethylene vinyl acetate (EVA) Bi-Density

OUTSOLE: Dolomite approach Tech by Vibram® - Megagrip Rubber Compound

FOOTBED: Polyurethane Foam Recycled - Mesh

FEATURES: Durable and protective upper#Full length lacing#Shock absorbing sole, Certified leather by LWG



0924 Denim Blue



1573 Ice Grey



PP INSOLE

> 3mm PP Injection Insole



APPROACH TECH SOLE

> 2 Moulded Bi-density Eva midsole
> Dolomite Approach Tech outsole by Vibram



DOLOMITE APPROACH TECH OUTSOLE BY VIBRAM®

Rubber compound:





Approach /
Hiking



Precise fit



4 UK-8 UK



434g - Half pair



Medium insole



Dolomite
Anatomic System



Wrapping System



420066 CRODAROSSA LEATHER GTX M'S

The Crodarossa Leather GTX is a lightweight mountain approach shoe, meant for those who look for the maximum freedom of movement while hiking or accessing climbing walls. The upper is made of suede leather, with e-foam details on the toe-box and heel to guarantee protection. The sole of Crodarossa is designed to guarantee a 360° adaptability to wearer's feet, providing comfort and stability in every kind of terrain. The heel area is built with softer EVA, guaranteeing great cushioning and protection from impacts. Conversely, the front area is stiffer and integrates a toe climbing zone, providing precision and supporting the wearer's weight on small ledges and cracks, without folding over. The Outsole, made with Vibram Megagrip rubber compound, it's built with pronounced heel and lugs, improving breaking on descents and grip on climbs. Waterproofness and breathability are guaranteed by GORE-TEX lining.

UPPER: Suede Leather - Stretch Fabric - E-Foam Protection

LINING: GORE-TEX Membrane - 3D Airmesh

INSOLE: Polypropylene

MIDSOLE: Ethylene vinyl acetate (EVA) Bi-Density

OUTSOLE: Dolomite approach Tech by Vibram® - Megagrip Rubber Compound

FOOTBED: Polyurethane Foam Recycled - Mesh

FEATURES: Durable and protective upper#Full length lacing#Shock absorbing sole, Certified leather by LWG



1425 Silver Green/Lime Green



1578 Iron Grey



PP INSOLE

> 3mm PP Injection Insole



APPROACH TECH SOLE

> 2 Moulded Bi-density Eva midsole
> Dolomite Approach Tech outsole by Vibram



DOLOMITE APPROACH TECH OUTSOLE BY VIBRAM®

Rubber compound:





Approach/
Hiking



Precise fit



4 UK-8 UK



510g - Half pair



Medium insole



Dolomite
Anatomic System



Wrapping System



Resolvable shoe



421129 CRODAROSSA HI GTX 2.0 W'S

The Crodarossa Hi GTX 2.0 Ws is the perfect choice for mountain approach, technical treks and via ferratas. Crafted from LWG certified suede leather, this shoe features a stretch fabric tongue, a stable Vibram® - Winkler Evo outsole and waterproof GORE-TEX lining. A shoe which ensures precision, stability and traction on uneven terrains.

UPPER: Suede Leather - Stretch Fabric - Rubber Protection

LINING: GORE-TEX® Membrane - Recycled Mesh

INSOLE: Polypropylene

MIDSOLE: Microporous Die Cut

OUTSOLE: Winkler Evo Vibram® - Megagrip Rubber Compound

FOOTBED: Polyurethane Foam - Recycled Mesh

FEATURES: Durable and protective upper, Full length lacing, Supportive collar, Certified leather by LWG, Resolvable Shoes



0924 Denim Blue



PP INSOLE

> 3mm PP die cut Insole

ALL GRIP SOLE

> Tpu Stabilizer
> 2 Density Die Cut Eva Midsole
> Winkler Evo Outsole by Vibram®



VIBRAM® WRINKLER EVO OUTSOLE

Rubber compound:





Approach/
Hiking



Precise fit



6 UK-12 UK



580g - Half pair



Medium insole



Dolomite
Anatomic System



Wrapping System



Resolable shoe



421128 CRODAROSSA HI GTX 2.0 M'S

The Crodarossa Hi GTX 2.0 s is the perfect choice for mountain approach, technical treks and via ferratas. Crafted from LWG certified suede leather, this shoe features a stretch fabric tongue, a stable Vibram® - Winkler Evo outsole and waterproof GORE-TEX lining. A shoe which ensures precision, stability and traction on uneven terrains.

UPPER: Suede Leather - Stretch Fabric - Rubber Protection

LINING: GORE-TEX® Membrane - Recycled Mesh

INSOLE: Polypropylene

MIDSOLE: Microporous Die Cut

OUTSOLE: Winkler Evo Vibram® - Megagrip Rubber Compound

FOOTBED: Polyurethane Foam - Recycled Mesh

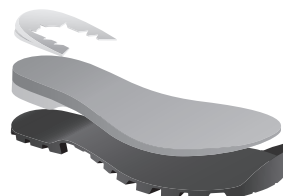
FEATURES: Durable and protective upper, Full length lacing, Supportive collar, Certified leather by LWG, Resolable Shoes



1520 Storm Grey/Burnt Orange



PP INSOLE
> 3mm PP die cut Insole



ALL GRIP SOLE
> Tpu Stabilizer
> 2 Density Die Cut Eva Midsole
> Winkler Evo Outsole by Vibram®



**VIBRAM® WRINKLER
EVO OUTSOLE**

Rubber compound:





**MOUNTAIN
LIFESTYLE
FOOTWEAR**





Walking and Travelling



Regular fit



3.5 UK-8.5 UK



375g - Half pair



Regular insole



Dolomite Anatomic System



Women's fit

423916 CAREZZA NABUK MID LT W'S

NEW

The Carezza Nabuk Mid Lt W's is a versatile shoe perfect for everyday use, travel, and walking in cold weather. It features durable LWG certified Oiled Nubuk leather, a supportive collar, and a Full Grain leather lining that guarantees comfort and protection. The carefully designed sole offers comfortable cushioning without adding extra weight. The Carezza Nabuk Mid Lt W's has been designed and built around a specific women's ergonomic shape to provide enhanced, long-lasting comfort and a snug fit.

UPPER: Oil Nubuk Sustainable Certified - Suede Sustainable Certified

LINING: Full Grain Leather - Recycled Polyester Mesh

INSOLE: Texon

MIDSOLE: Ethylene vinyl acetate (EVA) Recycled - Molded

OUTSOLE: Dolomite Rubber Recycled Compound

FOOTBED: Polyurethane Foam - Full Grain Leather Sustainable Certified

re^{source}
by  DOLOMITE

FEATURES: Durable and protective upper, Finest quality leather, Shock absorbing sole, Women's dedicated fit, Certified leather by LWG, Certified recycled materials



0119 Black



0922 Golden Yellow



DOLOMITE SOLE



Walking and Travelling



Regular fit



6 UK-13.5 UK



410g - Half pair



Regular insole



Dolomite Anatomic System

423914 CAREZZA NABUK MID LT M'S

NEW

The Carezza Nabuk Mid Lt M's is a versatile shoe perfect for everyday use, travel, and walking in cold weather. It features durable LWG certified Oiled Nubuk leather, a supportive collar, and a Full Grain leather lining that guarantees comfort and protection. The carefully designed sole offers comfortable cushioning without adding extra weight.

UPPER: Oil Nubuk Sustainable Certified - Suede Sustainable Certified

LINING: Full Grain Leather - Recycled Polyester Mesh

INSOLE: Texon

MIDSOLE: Ethylene vinyl acetate (EVA) Recycled - Molded

OUTSOLE: Dolomite Rubber Recycled Compound

FOOTBED: Polyurethane Foam - Full Grain Leather Sustainable Certified

re^{source}
by DOLOMITE

FEATURES: Durable and protective upper, Finest quality leather, Shock absorbing sole, Certified leather by LWG, Certified recycled materials



0119 Black



0922 Golden Yellow



DOLOMITE SOLE



Walking and Travelling



Regular fit



3.5 UK-8.5 UK



405g - Half pair



Regular insole



Dolomite Anatomic System



Waterproof



Women's fit

421119 CAREZZA LEATHER MID WP W'S

The Carezza Leather Mid WP W's is a versatile and eco-friendly shoe perfect for everyday use, travel, and walking in cold weather. It features durable LWG certified suede leather, a supportive collar, and a waterproof membrane for comfort and protection. The carefully designed sole offers comfortable cushioning without adding extra weight, while the shoe is entirely made from recycled materials, including the upper, sole, footbed, and waterproof membrane. The Carezza Leather Mid WP W's has been designed and built around a specific women's ergonomic shape to provide enhanced, long-lasting comfort and a snug fit.

UPPER: Suede Sustainable Certified - Recycled Polyester Mesh - Vulcanized Rubber

LINING: Recycled Polyester Mesh - Sustainable Waterproof Membrane

INSOLE: Texon

MIDSOLE: Ethylene vinyl acetate (EVA) Recycled - Molded

OUTSOLE: Dolomite Rubber Recycled Compound

FOOTBED: Polyurethane Foam - Recycled Polyester Mesh

re^{source}
by DOLOMITE

FEATURES: Durable and protective upper, Finest quality leather, Supportive collar, Shock absorbing sole, Women's dedicated fit, Certified leather by LWG, Eco-Responsible waterproof membrane



1325 Aluminium Grey



0193 Brown



1472 Silver Green

DOLOMITE SOLE





Walking and Travelling



Regular fit



6 UK-13.5 UK



445g - Half pair



Regular insole



Dolomite Anatomic System



Waterproof

421118 CAREZZA LEATHER MID WP M'S

The Carezza Leather Mid WP M's is a versatile and eco-friendly shoe perfect for everyday use, travel, and walking in cold weather. It features durable LWG certified suede leather, a supportive collar, and a waterproof membrane for comfort and protection. The carefully designed sole offers comfortable cushioning without adding extra weight, while the shoe is entirely made from recycled materials, including the upper, sole, footbed, and waterproof membrane.

UPPER: Suede Sustainable Certified - Recycled Polyester Mesh - Vulcanized Rubber

LINING: Recycled Polyester Mesh - Sustainable Waterproof Membrane

INSOLE: Texon

MIDSOLE: Ethylene vinyl acetate (EVA) Recycled - Molded

OUTSOLE: Dolomite Rubber Recycled Compound

FOOTBED: Polyurethane Foam - Recycled Polyester Mesh



FEATURES: Durable and protective upper, Finest quality leather, Supportive collar, Shock absorbing sole, Certified leather by LWG, Eco-Responsible waterproof membrane



0928 Chocolate Brown



1028 Thyme Green



1519 Sepia Brown

DOLOMITE SOLE





Walking and Travelling



Regular fit



3.5 UK-8.5 UK



350g - Half pair



Regular insole



Dolomite Anatomic System



Waterproof



Women's fit

424408 CAREZZA LEATHER WP W'S

NEW

Carezza Leather WP W's is a lightweight shoe, comfortable for everyday wear, travel and outdoor walks as well. Its sole has been carefully designed thinking at the feet ergonomics and it's structured to provide a comfortable cushioning during each walking phase, without prejudging the overall weight. Moreover it features a waterproof lining, to keep you always protected. Carezza Leather WP W's is designed and built on a dedicated ergonomic shape for women's, to offer enhanced long-lasting comfort and a snug fit.

UPPER: Suede Sustainable Certified - Vulcanized Rubber

LINING: Recycled Polyester Mesh - Sustainable Waterproof Membrane

INSOLE: Texon

MIDSOLE: Ethylene vinyl acetate (EVA) Recycled - Molded

OUTSOLE: Dolomite Rubber Recycled Compound

FOOTBED: Polyurethane Foam - Recycled Polyester Mesh

re^{source}
by DOLOMITE

FEATURES: Durable and protective upper, Finest quality leather, Shock absorbing sole, Women's dedicated fit, Certified leather by LWG, Eco-Responsible waterproof membrane



0158 Blue



0848 Taupe Beige



1325 Aluminium Grey

DOLOMITE SOLE





Walking and Travelling



Regular fit



6 UK-13.5 UK



405g - Half pair



Regular insole



Dolomite Anatomic System



Waterproof

424407 CAREZZA LEATHER WP M'S

NEW

Carezza Leather WP M's is a lightweight shoe, comfortable for everyday wear, travel and outdoor walks as well. Its sole has been carefully designed thinking at the feet ergonomics and it's structured to provide a comfortable cushioning during each walking phase, without prejudging the overall weight. Moreover it features a waterproof lining, to keep you always protected.

UPPER: Suede Sustainable Certified - Vulcanized Rubber

LINING: Recycled Polyester Mesh - Sustainable Waterproof Membrane

INSOLE: Texon

MIDSOLE: Ethylene vinyl acetate (EVA) Recycled - Molded

OUTSOLE: Dolomite Rubber Recycled Compound

FOOTBED: Polyurethane Foam - Recycled Polyester Mesh

re source
by DOLOMITE

FEATURES: Durable and protective upper, Finest quality leather, Shock absorbing sole, Certified leather by LWG, Eco-Responsible waterproof membrane



0160 Blue Navy



1076 Gunmetal Grey



1658 Night Green/Black

DOLOMITE SOLE





Walking and Travelling



Regular fit



3.5 UK-8.5 UK



315g - Half pair



Super-Flex insole



Dolomite Anatomic System



Women's fit

420085 CAREZZA LEATHER W'S

Carezza Leather W's is a lightweight shoe, comfortable for everyday wear, travel and outdoor walks as well. Its sole has been carefully designed thinking at the feet ergonomics and it's structured to provide a comfortable cushioning during each walking phase, without prejudging the overall weight. Moreover, they're as comfortable as eco-sustainable! Every elements in the shoe is made with recycled or sustainable certified materials, from the suede leather upper, to the sole, passing through laces, lining and footbed. Carezza Leather W's is designed and built on a dedicated ergonomic shape for women's, to offer enhanced long-lasting comfort and a snug fit.

UPPER: Suede Sustainable Certified - Vulcanized Rubber

LINING: Recycled Mesh

INSOLE: Non-Woven

MIDSOLE: Ethylene vinyl acetate (EVA) Recycled - Molded

OUTSOLE: Dolomite Rubber Recycled Compound

FOOTBED: Polyurethane Foam - Recycled Mesh

re source
by DOLOMITE

FEATURES: Durable and protective upper, Finest quality leather, Shock absorbing sole, Women's dedicated fit, Certified leather by LWG



0086 Beige



1392 Nude Pink



1640 Iceberg Green

DOLOMITE SOLE





Walking and Travelling



Regular fit



6 UK-13.5 UK



365g - Half pair



Super-Flex insole



Dolomite Anatomic System

420084 CAREZZA LEATHER M'S

Carezza Leather M's is a lightweight shoe, comfortable for everyday wear, travel and outdoor walks as well. Its sole has been carefully designed thinking at the feet ergonomics and it's structured to provide a comfortable cushioning during each walking phase, without prejudging the overall weight. Moreover, they're as comfortable as eco-sustainable! Every elements in the shoe is made with recycled and sustainable certified materials, from the suede leather upper, to the sole, passing through laces, lining and footbed.

UPPER: Suede Sustainable Certified - Vulcanized Rubber

LINING: Recycled Mesh

INSOLE: Non-Woven

MIDSOLE: Ethylene vinyl acetate (EVA) Recycled - Molded

OUTSOLE: Dolomite Rubber Recycled Compound

FOOTBED: Polyurethane Foam - Recycled Mesh

re3source
by DOLOMITE

FEATURES: Durable and protective upper, Finest quality leather, Shock absorbing sole, Certified leather by LWG



0922 Golden Yellow



1519 Sepia Brown



1028 Thyme Green



1444 Atlantic Blue

DOLOMITE SOLE



54-CINQUANTAQUATTRO RANGE









Every Day Use/
Multifunction



Regular fit



3 UK-13.5 UK



485g - Half pair



Regular insole



Dolomite
Anatomic System



Resoleable shoe



424962 54 HIGH DUST GTX

NEW

With its original design, 54 High Dust GTX seamlessly transitions from outdoor world to urban outings, all while maintaining the authentic heritage look of the iconic 54 model. The upper is made with LWG certified suede leather while its lining is made out of GORE-TEX® membrane and certified Full Grain Leather. The Dolomite Vibram® outsole, in Ice-Trek 2 compound guarantees an optimal grip and durability on every surfaces.

UPPER: Suede Sustainable Certified - Vulcanized Rubber

LINING: GORE-TEX® Membrane - Full Grain Leather

INSOLE: Texon

MIDSOLE: Microporous Ethylene vinyl acetate (EVA) Die-Cut

OUTSOLE: Dolomite Brenta by Vibram® - Ice Trek 2 compound by Vibram®

FOOTBED: Ethylene vinyl acetate (EVA) Recycled - Recycled Mesh

FEATURES: Finest quality leather, Durable and protective upper, Supportive collar, Stable and flexible outsole, Certified leather by LWG, Resoleable shoe



1347 Sage Green



1076 Gunmetal Grey



1190 Autumn Brown



0924 Denim Blue



1519 Sepia Brown



1642 Bone White



**DOLOMITE BRENTA
SOLE BY VIBRAM®**

Rubber compound:





Multifunction



Regular fit



3.5 UK-8.5 UK



450g - Half pair



Regular insole



Dolomite Anatomic System



Resoleable shoe



Waterproof



Women's fit



423901 54 WARM EVO WP W'S

NEW

Cinquantaquattro Warm Evo WP M's is a retro-style boot, that represents the perfect mix of style and performance, designed to guarantee maximum protection against the lowest temperatures. Crafted with mesh and LWG-certified sustainable Nubuk leather, it features a Primaloft 100% recycled lining which guarantees insulation against the cold and a waterproof membrane for a 360° protection. The VIBRAM sole features Arctic Grip technology compound for superb grip on icy surfaces, especially wet ice. This version is specifically designed with the "Perfecta" constructive system, which is specifically contoured to the shape of the female foot.

UPPER: Nubuk Sustainable Certified - Felt - Vulcanized Rubber

LINING: Sustainable Waterproof Membrane - Recycled Polyester - Primaloft® Insulation Eco

INSOLE: Cork

MIDSOLE: Microporous Ethylene vinyl acetate (EVA) Die-Cut Recycled

OUTSOLE: Vigezzo Vibram® - Arctic Grip™ by Vibram®

FOOTBED: Ethylene vinyl acetate (EVA) Recycled - Recycled Mesh

re^{source}
by DOLOMITE

FEATURES: Finest quality leather, Durable and protective upper, Supportive collar, Stable and flexible outsole, Certified leather by LWG, Resoleable shoe, Eco-Responsible waterproof membrane



0119 Black



1325 Aluminium Grey



1398 Pinecone Brown



VIBRAM®
VIGEZZO SOLE

Rubber compound:





Multifunction



Regular fit



6 UK-12.5 UK



575g - Half pair



Regular insole



Dolomite Anatomic System



Resoleable shoe



Waterproof



423900 54 WARM EVO WP M'S

NEW

Cinquantaquattro Warm Evo WP M's is a retro-style boot, that represents the perfect mix of style and performance, designed to guarantee maximum protection against the lowest temperatures. Crafted with mesh and LWG-certified sustainable Nubuk leather, it features a Primaloft 100% recycled lining which guarantees insulation against the cold and a waterproof membrane for a 360° protection. The VIBRAM sole features Arctic Grip technology compound for superb grip on icy surfaces, especially wet ice.

UPPER: Nubuk Sustainable Certified - Felt - Vulcanized Rubber

LINING: Sustainable Waterproof Membrane - Recycled Polyester - Primaloft® Insulation Eco

INSOLE: Cork

MIDSOLE: Microporous Ethylene vinyl acetate (EVA) Die-Cut Recycled

OUTSOLE: Vigezzo Vibram® - Arctic Grip™ by Vibram®

FOOTBED: Ethylene vinyl acetate (EVA) Recycled - Recycled Mesh

re^{source}
by **DOLOMITE**

FEATURES: Finest quality leather, Durable and protective upper, Supportive collar, Stable and flexible outsole, Certified leather by LWG, Resoleable shoe, Eco-Responsible waterproof membrane



0160 Blue Navy



0922 Golden Yellow



1398 Pinecone Brown



**VIBRAM®
VIGEZZO SOLE**

Rubber compound:





Every Day Use/
Multifunction



Regular fit



3 UK-8.5 UK



435g - Half pair



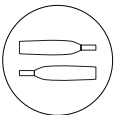
Regular insole



Dolomite
Anatomic System



Resoleable shoe



Double lace



Women's fit



292533 54 HIGH FG EVO GTX W'S

The iconic Cinquantaquattro High FG Boot takes a step towards sustainability. The Cinquantaquattro High FG EVO is crafted with sustainable Oiled Nubuck and features a waterproof GORE-TEX® liner, OEKO-TEX® 100 certified. The comfortable footbed, just like the laces, is made out of recycled materials. The Dolomite Vibram® outsole, build with Ice-Trek 2 compound, provides great grip and a well-cushioned support during walks, and it's made out of 20% recycled EVA powder. Built on the "Perfecta" last, the Women's Cinquantaquattro High has been specifically designed for the anatomy of women's feet.

UPPER: Oil Nubuk Sustainable Certified - Vulcanized Rubber

LINING: GORE-TEX® Membrane - Full Grain Leather Sustainable Certified

INSOLE: Cork

MIDSOLE: Microporous Ethylene vinyl acetate (EVA) Die-Cut Recycled

OUTSOLE: Dolomite Brenta by Vibram® - Ice Trek 2 compound by Vibram®

FOOTBED: Ethylene vinyl acetate (EVA) Recycled - Recycled Mesh

re source
by DOLOMITE

FEATURES: Finest quality leather, Durable and protective upper, Supportive collar, Stable and flexible outsole, Women's dedicated fit, Second lace option, Certified leather by LWG, Resoleable shoe, GORE-TEX® with ePE membrane PFC-Free with a reduced carbon footprint



1076 Gunmetal Grey

Lace 1
Lace 2



0193 Brown



0848 Taupe Beige



1325 Aluminium Grey



1378 Oak Brown



1665 Rosewood Brown



DOLOMITE BRENTA
SOLE BY VIBRAM®

Rubber compound:





Every Day Use/
Multifunction



Regular fit



3.5 UK-13.5 UK



500g - Half pair



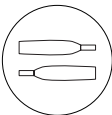
Regular insole



Dolomite
Anatomic System



Resoleable shoe



Double lace



292529 54 HIGH FG EVO GTX

The iconic Cinquantaquattro High FG Boot takes a step towards sustainability. The Cinquantaquattro High FG EVO is crafted with sustainable Oiled Nubuck and features a waterproof GORE-TEX® liner, OKEO-TEX® 100 certified. The comfortable footbed, just like the laces, is made out of recycled materials. The Dolomite Vibram® outsole, build with Ice-Trek 2 compound, provides great grip and a well-cushioned support during walks, and it's made out of 20% recycled EVA powder. A one-of-a-kind choice for everyday living as well as easy walks, widely appreciated for its comfort.

UPPER: Oil Nubuk Sustainable Certified - Vulcanized Rubber

LINING: GORE-TEX® Membrane - Full Grain Leather Sustainable Certified

INSOLE: Cork

MIDSOLE: Microporous Ethylene vinyl acetate (EVA) Die-Cut Recycled

OUTSOLE: Dolomite Brenta by Vibram® - Ice Trek 2 compound by Vibram®

FOOTBED: Ethylene vinyl acetate (EVA) Recycled - Recycled Mesh

re source
by DOLOMITE

FEATURES: Finest quality leather, Durable and protective upper, Supportive collar, Stable and flexible outsole, Second lace option, Certified leather by LWG, Resoleable shoe, GORE-TEX® with ePE membrane PFC-Free with a reduced carbon footprint



1665 Rosewood Brown

Lace 1 ●
Lace 2 ●



0160 Blue Navy



0300 Dark Brown



0922 Golden Yellow



1347 Sage Green



1519 Sepia Brown



1605 Gunmetal Grey/Black



1608 Legion Blue



0119 Black



DOLOMITE BRENTA
SOLE BY VIBRAM®

Rubber compound:





Every Day Use/
Multifunction



Regular fit



3.5 UK-13.5 UK



450g - Half pair



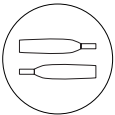
Regular insole



Dolomite
Anatomic System



Resoleable shoe



Double lace

292531 54 MID FG EVO

The Cinquantaquattro MID FG take a step towards sustainability, showing up in this new, Re-source by Dolomite-certified version. The Cinquantaquattro MID FG are crafted with sustainable Oiled Nubuck and features a warm liner made out of sustainable full-grain leather. The comfortable footbed, just like the laces, is made out of recycled materials. The Dolomite Vibram® outsole, built with Ice-Trek 2 compound, provides great grip and a well-cushioned support during walks, and it's made out of 20% recycled EVA powder. A multi-functional shoe, ideal for either every-day living or easy walks.

UPPER: Oil Nubuck Sustainable Certified - Vulcanized Rubber

LINING: Full Grain Leather Sustainable Certified

INSOLE: Cork

MIDSOLE: Microporous Ethylene vinyl acetate (EVA) Die-Cut Recycled

OUTSOLE: Dolomite Brenta by Vibram® - Ice Trek 2 compound by Vibram®

FOOTBED: Ethylene vinyl acetate (EVA) Recycled - Recycled Mesh

re source
by DOLOMITE

FEATURES: Finest quality leather, Durable and protective upper, Supportive collar, Stable and flexible outsole, Second lace option, Certified leather by LWG, Resoleable shoe



Lace 1 
Lace 2 

0119 Black






0300 Dark Brown






0922 Golden Yellow






1605 Gunmetal Grey/Black



**DOLOMITE BRENTA
SOLE BY VIBRAM®**

Rubber compound:





Every Day Use/
Multifunction



Regular fit



3.5 UK-13.5 UK



430g - Half pair



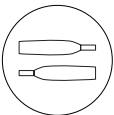
Regular insole



Dolomite
Anatomic System



Resoleable shoe



Double lace

423965 54 LOW EVO LT

NEW

Made out of LWG certified Oiled Nubuk, with a LWG certified Full Grain Leather lining, these shoes guarantee a very comfortable fit for a day-to-day use. The VIBRAM® outsole, which ensures the highest levels of durability, makes the Cinquantaquattro Low LT the ideal solution for urban explorers.

UPPER: Oil Nubuk Sustainable Certified - Vulcanized Rubber

LINING: Full Grain Leather Sustainable Certified

INSOLE: Cork

MIDSOLE: Microporous Ethylene vinyl acetate (EVA) Die-Cut Recycled

OUTSOLE: Dolomite Brenta by Vibram® - Ice Trek 2 compound by Vibram®

FOOTBED: Ethylene vinyl acetate (EVA) Recycled - Recycled Mesh

re³source
by DOLOMITE

FEATURES: Finest quality leather, Durable and protective upper, Stable and flexible outsole, Second lace option, Certified leather by LWG, Resoleable shoe

Lace 1 ●
Lace 2 ●



1181 Pewter Grey



1197 Dark Blue



1212 Otter Brown



1519 Sepia Brown



**DOLOMITE BRENTA
SOLE BY VIBRAM®**

Rubber compound:





Every Day Use/
Multifunction



3 UK-8.5 UK



385g - Half pair



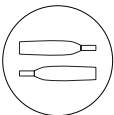
Regular insole



Dolomite
Anatomic System



Resoleable shoe



Double lace



Women's fit



292534 54 LOW FG EVO GTX W'S

The iconic Cinquantaquattro Low FG takes a step towards sustainability. The Cinquantaquattro Low FG GTX EVO is crafted with sustainable Oiled Nubuck and features a waterproof GORE-TEX® liner, OKEO-TEX® 100 certified. The comfortable footbed, just like the laces, is made out of recycled materials. The Dolomite Vibram® outsole, build with Ice-Trek 2 compound, provides great grip and a well-cushioned support during walks, and it's made out of 20% recycled EVA powder. Built on the "Perfecta" last, the Women's Cinquantaquattro has been specifically designed for the anatomy of women's feet.

UPPER: Oil Nubuk Sustainable Certified - Vulcanized Rubber

LINING: GORE-TEX® Membrane - Full Grain Leather Sustainable Certified

INSOLE: Cork

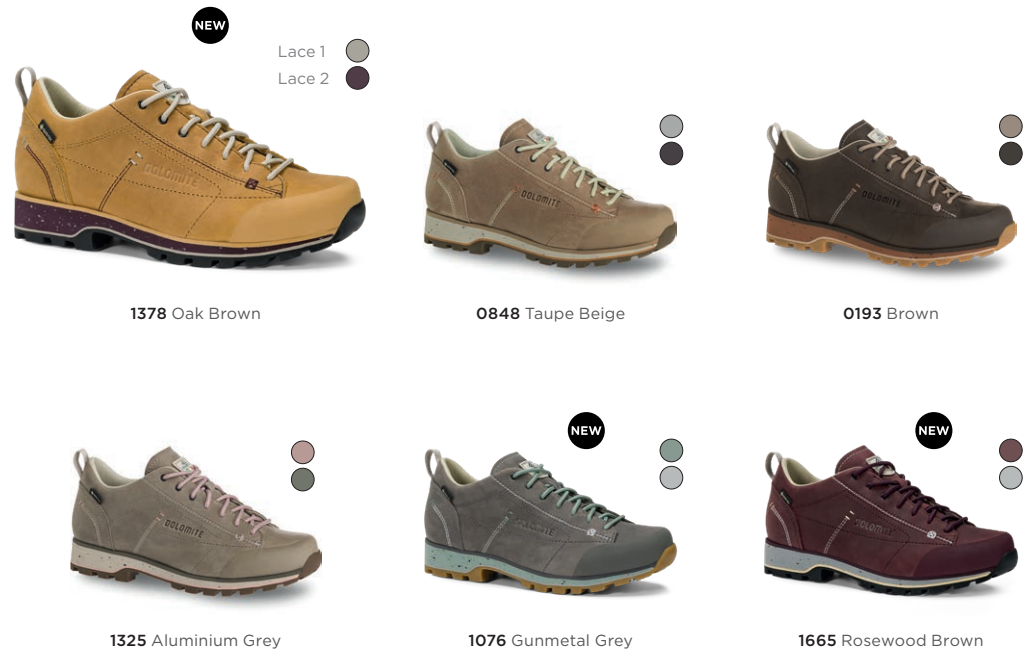
MIDSOLE: Microporous Ethylene vinyl acetate (EVA) Die-Cut Recycled

OUTSOLE: Ice Trek 2 Rubber Compound

FOOTBED: Ethylene vinyl acetate (EVA) Recycled - Recycled Mesh

re source
by DOLOMITE

FEATURES: Finest quality leather, Durable and protective upper, Stable and flexible outsole, Women's dedicated fit, Second lace option, Certified leather by LWG, Resoleable shoe, GORE-TEX® with ePE membrane PFC-Free with a reduced carbon footprint



DOLOMITE BRENTA
SOLE BY VIBRAM®

Rubber compound:





Every Day Use/
Multifunction



3.5 UK-13.5 UK



445g - Half pair



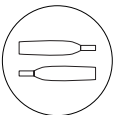
Regular insole



Dolomite
Anatomic System



Resoleable shoe



Double lace



292530 54 LOW FG EVO GTX

The iconic Cinquantaquattro Low FG takes a step towards sustainability. The Cinquantaquattro Low FG GTX EVO is crafted with sustainable Oiled Nubuck and features a waterproof GORE-TEX® liner, OKEO-TEX® 100 certified. The comfortable footbed, just like the laces, is made out of recycled materials. The Dolomite Vibram® outsole, build with Ice-Trek 2 compound, provides great grip and a well-cushioned support during walks, and it's made out of 20% recycled EVA powder. A one-of-a-kind choice for everyday living as well as easy walks, widely appreciated for its comfort.

UPPER: Oil Nubuk Sustainable Certified - Vulcanized Rubber

LINING: GORE-TEX® Membrane - Full Grain Leather Sustainable Certified

INSOLE: Cork

MIDSOLE: Microporous Ethylene vinyl acetate (EVA) Die-Cut Recycled

OUTSOLE: Ice Trek 2 Rubber Compound

FOOTBED: Ethylene vinyl acetate (EVA) Recycled - Recycled Mesh

re^{source}
by DOLOMITE

FEATURES: Finest quality leather, Durable and protective upper, Stable and flexible outsole, Second lace option, Certified leather by LWG, Resoleable shoe, GORE-TEX® with ePE membrane PFC-Free with a reduced carbon footprint

NEW

Lace 1
Lace 2



1608 Legion Blue



0160 Blue Navy



0300 Dark Brown



0922 Golden Yellow



1347 Sage Green



1519 Sepia Brown



1605 Gunmetal Grey/Black



0119 Black



1665 Rosewood Brown



DOLOMITE BRENTA
SOLE BY VIBRAM®

Rubber compound:





Every Day Use/
Multifunction



Regular fit



3 UK-8.5 UK



375g - Half pair



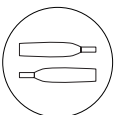
Regular insole



Dolomite
Anatomic System



Resoleable shoe



Double lace



Women's fit



423964 54 LOW EVO GTX W'S

NEW

The 54 Low EVO GTX, features an LWG-certified suede leather upper while its lining is made out of GORE-TEX® membrane and certified Full Grain Leather. The Dolomite Vibram® outsole, in Ice-Trek 2 compound guarantees an optimal grip and durability on every surfaces. This version is specifically designed with the "Perfecta" constructive system, which is specifically contoured to the shape of the female foot.

UPPER: Suede Sustainable Certified - Vulcanized Rubber

LINING: GORE-TEX® Membrane - Full Grain Leather Sustainable Certified

INSOLE: Cork

MIDSOLE: Microporous Ethylene vinyl acetate (EVA) Die-Cut Recycled

OUTSOLE: Dolomite Brenta by Vibram® - Ice Trek 2 compound by Vibram®

FOOTBED: Ethylene vinyl acetate (EVA) Recycled - Recycled Mesh

re source
by DOLOMITE

FEATURES: Finest quality leather, Durable and protective upper, Stable and flexible outsole, Second lace option, Certified leather by LWG, Resoleable shoe



**DOLOMITE BRENTA
SOLE BY VIBRAM®**

Rubber compound:



ICETREK



Every Day Use/
Multifunction



Regular fit



3.5 UK-13.5 UK



425g - Half pair



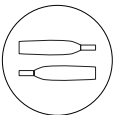
Regular insole



Dolomite
Anatomic System



Resoleable shoe



Double lace



423963 54 LOW EVO GTX

NEW

The 54 Low EVO GTX, features an LWG-certified suede leather upper while its lining is made out of GORE-TEX® membrane and certified Full Grain Leather. The Dolomite Vibram® outsole, in Ice-Trek 2 compound guarantees an optimal grip and durability on every surfaces.

UPPER: Suede Sustainable Certified - Vulcanized Rubber

LINING: GORE-TEX® Membrane - Full Grain Leather Sustainable Certified

INSOLE: Cork



MIDSOLE: Microporous Ethylene vinyl acetate (EVA) Die-Cut Recycled

OUTSOLE: Dolomite Brenta by Vibram® - Ice Trek 2 compound by Vibram®

FOOTBED: Ethylene vinyl acetate (EVA) Recycled - Recycled Mesh

re source
by DOLOMITE

FEATURES: Finest quality leather, Durable and protective upper, Stable and flexible outsole, Second lace option, Certified leather by LWG, Resoleable shoe

Lace 1 
Lace 2 



0226 Avio



0922 Golden Yellow






0928 Chocolate Brown

DOLOMITE BRENTA SOLE BY VIBRAM®

Rubber compound:





Every Day Use/
Multifunction



Regular fit



3 UK-8.5 UK



375g - Half pair



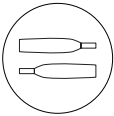
Regular insole



Dolomite
Anatomic System



Resolvable shoe



Double lace



Women's fit

289211 54 LOW EVO W'S

The iconic Cinquantaquattro writes a new chapter of its history, embracing sustainability. Its latest evolution, the 54 Low EVO for women, features an LWG-certified sustainable suede leather upper while its lining is made out of 100% recycled certified mesh. The comfortable footbed, just like the laces, is made out of recycled materials too. The Dolomite Vibram® outsole, in Eco-Step compound, it's made out of recycled materials and guarantees an optimal grip and durability on every surfaces. This version is specifically designed with the "Perfecta" constructive system, which is specifically contoured to the shape of the female foot.

UPPER: Suede Sustainable Certified - Vulcanized Rubber

LINING: Recycled Mesh - Full Grain Leather Sustainable Certified

INSOLE: Cork

MIDSOLE: Microporous Ethylene vinyl acetate (EVA) Die-Cut Recycled

OUTSOLE: Dolomite Brenta by Vibram® - EcoStep Rubber Compound

FOOTBED: Ethylene vinyl acetate (EVA) Recycled - Recycled Mesh

re source
by DOLOMITE

FEATURES: Finest quality leather, Durable and protective upper, Stable and flexible outsole, Women's dedicated fit, Certified leather by LWG, Resoleable shoe



Lace 1
Lace 2

1643 Cork Brown



0158 Blue



0300 Dark Brown



1076 Gunmetal Grey



0386 Grey



1347 Sage Green



**DOLOMITE BRENTA
SOLE BY VIBRAM®**

Rubber compound:





Every Day Use/
Multifunction



Regular fit



3.5 UK-13.5 UK



465g - Half pair



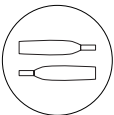
Regular insole



Dolomite
Anatomic System



Resolvable shoe



Double lace

289205 54 LOW EVO

The iconic Cinquantaquattro writes a new chapter of its history, embracing sustainability. Its latest evolution, the 54 Low EVO, features an LWG-certified sustainable suede leather upper while its lining is made out of 100% recycled certified mesh. The comfortable footbed, just like the laces, is made out of recycled materials too. The Dolomite Vibram® outsole, in Eco-Step compound, it's made out of recycled materials and guarantees an optimal grip and durability on every surfaces.

UPPER: Suede Sustainable Certified - Vulcanized Rubber

LINING: Recycled Mesh - Full Grain Leather Sustainable Certified

INSOLE: Cork

MIDSOLE: Microporous Ethylene vinyl acetate (EVA) Die-Cut Recycled

OUTSOLE: Dolomite Brenta by Vibram® - Ecostep Rubber Compound

FOOTBED: Ethylene vinyl acetate (EVA) Recycled - Recycled Mesh

FEATURES: Finest quality leather, Durable and protective upper, Stable and flexible outsole, Certified leather by LWG, Resoleable shoe

re source
by DOLOMITE



Lace 1 
Lace 2 

0300 Dark Brown






0821 Gunmetal Grey/Canapa Beige






0172 Blue/Cord






1605 Gunmetal Grey/Black






0158 Blue






1028 Thyme Green



**DOLOMITE BRENTA
SOLE BY VIBRAM®**

Rubber compound:





Every Day Use/
Multifunction



Regular fit



3.5 UK-12.5 UK



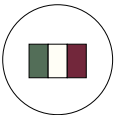
730g - Half pair



Medium insole



Dolomite
Anatomic System



Made in Italy

248730 54 LA CLASSICA

The most traditional mountaineering shoe, reinterpreted for our times and crafted using "Ideal" handmade artisanal processing. Featuring prestigious materials and finishes, and extreme attention to detail with an artisanal feel, La Classica represents the maximum expression of excellence and Italian-made quality. An iconic must-have boot for winter seasons.

UPPER: Full Grain Leather - Soft Nubuk Leather

LINING: Full Grain Leather

INSOLE: Full Leather

OUTSOLE: Roccia Vibram® - Mont compound by Vibram®

FOOTBED: Ethylene vinyl acetate (EVA) - Full Grain Leather

FEATURES: Finest quality leather, Durable and protective upper, Supportive collar, Made in Italy,



0119 Black



0713 Testa Moro



VIBRAM® ROCCIA SOLE

Rubber compound:





Every Day Use/
Multifunction



Regular fit



3.5 UK-12.5 UK



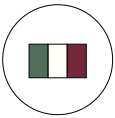
435g - Half pair



Super Flex insole



Dolomite
Anatomic System



Made in Italy

262940 54 LA CLASSICA LH

La Classica LH reinterprets our most emblematic boot with a lighter version, fruit of a skilful materials selection and the VIBRAM® Morflex® sole's new compound, which ensures great lightness, exceptional impact cushioning, and extreme comfort for daily wear. The result is a timeless must-have which mix urban taste with love of the outdoor.

UPPER: Soft Nubuk Leather

INSOLE: Texon

OUTSOLE: Genepy Vibram® - VI-LITE Rubber Compound

FOOTBED: Ethylene vinyl acetate (EVA) - Microfiber

FEATURES: Finest quality leather, Durable and protective upper, Supportive collar, Made in Italy,



0300 Dark Brown



0926 Ochre Red



VIBRAM® GENEPY SOLE

Rubber compound:



**MAINTENANCE
& CARE/
SPARE PARTS**





287242 WATERPROOF SHOE SPRAY PAK-12

DESCRIPTION: Protective, water-based waterproofing for footwear. Gives leather excellent resistance to soiling without altering its feel.

SIZE: 200 ml

COMPOSITION: 3% Fluoroacrylic resin - 14% Methoxy Propanol - 83% Water

FEATURES: Waterproof Water based Shoes Spray PFOA/PFOS Free. Ensures good protection to soiling in leather and fabric - PE bottle Recyclable



12x



9999 No Color

296426 WATERPROOF SHOE CREAM PAK-12

DESCRIPTION: Cream containing waxes, oils and fats providing enhanced water-repellency

SIZE: 100 ml

COMPOSITION: 5% Paraffin - 80% Paraffin Oil - 15% Hydrocarbure C11-14

FEATURES: Wax Oil Shoes Cream Waterproof PFC Free. Suitable for Full Grain Leather or Oil Leather. PE case Recyclable



12x



9999 No Color

294817 DOL 54 FOOTBED

SIZE: 3-13.5

COMPOSITION: 100% Polyester - 100% Eva

FEATURES: Anatomical Das Light Footbed in mesh



0086 Beige

297201 DOL 54 FOOTBED LT

SIZE: 3-13.5

COMPOSITION: 100% Full Grain Leather - 100% Eva

FEATURES: Anatomical Das Light Footbed in Leather



0086 Beige

297202 DOL PERFORMANCE FOOTBED

SIZE: 3-13.5

COMPOSITION: 100% Polyester - 100% Eva

FEATURES: Anatomical Das Light Footbed in mesh



0119 Black

292682 54 VIBRAM OUTSOLE BRENTA ICETREK

SIZE: 3-13

COMPOSITION: 100% Rubber, Vibram Ice Treck compound



0119 Black

297194 LACES 54 HIGH BOX 36 PAIR

Shoelaces for model **54 HIGH**

SIZE: M
170 cm
7 - 9,5 UK

COMPOSITION: 100% Recycled Polyester
FEATURES: 36 pairs round laces GRS Certified



1522 Multicolor

297193 LACES 54 LOW BOX 36 PAIR

Shoelaces for model **54 LOW**

SIZE: M
145 cm
7 - 9,5 UK

COMPOSITION: 100% Recycled Polyester
FEATURES: 36 pairs round laces GRS Certified



1522 Multicolor

270273 DOL LACES 54 HIGH PAK-12

Shoelaces for model **54 HIGH**

SIZE:	S	M	L
	165 cm	170 cm	175 cm
	3 - 6,5 UK	7 - 9,5 UK	10 - 13,5 UK

COMPOSITION: 100% Recycled Polyester
FEATURES: 12 pairs round laces GRS Certified



0119 Black



0158 Blue



0369 Green



0614 Orange



0637 Red



1188 Canapa Beige

270274 DOL LACES 54 LOW PAK-12

Shoelaces for model **54 LOW**

SIZE:	S	M	L
	140 cm	145 cm	150 cm
	3 - 6,5 UK	7 - 9,5 UK	10 - 13,5 UK

COMPOSITION: 100% Recycled Polyester
FEATURES: 12 pairs round laces GRS Certified



0119 Black



0158 Blue



0369 Green



0614 Orange



0637 Red



1188 Canapa Beige

291750 LACES HIKING HIGH PAK-12

SIZE:	S	M	L
	145 cm	150 cm	155 cm
	3 - 6,5 UK	7 - 9,5 UK	10 - 13,5 UK

COMPOSITION: 100% Recycled Polyester
FEATURES: 12 pairs bicolor round laces GRS Certified



1445 Black/Aluminium Grey



1446 Anthracite Grey/ Black

291749

LACES HIKING LOW PAK-12

SIZE:	S	M	L
	130 cm	135 cm	140 cm
	3 - 6,5 UK	7 - 9,5 UK	10 - 13,5 UK

COMPOSITION: 100% Recycled Polyester
FEATURES: 12 pairs bicolor round laces GRS Certified



1445 Black/Aluminium Grey



1446 Anthracite Grey/ Black



FOOTWEAR
TECHNOLOGIES

DOLOMITE VERNALE SOLE BY VIBRAM®



ABOUT

Designed for hiking and multi-day treks on mountain trails.

An original sole designed by Dolomite and made with various Vibram compounds: XS Trek or Megagrip for the leather version. It offers great grip and stability thanks to its design concept, characterised by 4,5 mm lugs and two functional areas, such as the front traction area and the rear braking area.

The shock-absorbing X-FOAM midsole, with its double density construction and anti-torsion system, perfectly combines cushioning and stability.

BENEFITS:

GRIP, TRACTION, CUSHIONING

1. Perimeter lugs design for high stability
2. Low density X-FOAM for cushioning
3. Hard density X-FOAM for stability
4. TPU anti-torsion shank



RANGE MODEL



- Vernale Leather High GTX M's
- Vernale Leather High GTX W's



- Vernale High GTX M's
- Vernale High GTX W's

TPU anti-torsion shank



DOLOMITE NEW HIKER SOLE BY VIBRAM®



ABOUT

Designed for travel, active walking and fast hiking on mountain trails.

An original sole, designed by Dolomite and crafted XS Trek Vibram compound. It offers great grip and stability, thanks to the Vibram Traction Lug design concept with 4,5mm lugs. The empty design solution on the front and back area, enhance the flexibility while increasing the overall sole lightness.

The shock-absorbing EVA midsole, offers great cushioning during dynamic activities, increasing the stability thanks to the ESS anti-torsion insert.

BENEFITS:

LIGHTNESS, GRIP, FLEXIBILITY

1. External Vibram Traction Lug design for stability and grip
2. Empty lines design for flexibility and lightness
3. EVA cushioning for comfort
4. ESS insert for anti-torsion



RANGE MODEL



- Nibelia M's
- Nibelia W's



- Nibelia Gtx M's
- Nibelia Gtx W's



- Nibelia High Gtx M's
- Nibelia High Gtx W's



APPROACH TECH SOLE BY VIBRAM®



ABOUT

Designed for mountain approach on short distance and scrambling. Pronounced heel and lugs provide braking on descents and grip on climbs.

Excellent shock absorption during dynamic activities thanks to the bi-density Eva midsole.

The specific rubber bottom design, combined with Vibram Megagrip compound, provides grip and traction on every terrain.

BENEFITS:

STABILITY, TRACTION, DURABILITY

1. Multidirectional lugs for traction and stability
2. Integrated climbing zone
3. Asymmetrical design defines heel impact zone
4. Hard EVA front area for stability
5. Soft EVA back area for cushioning
6. Asymmetrical design guarantees best performance



RANGE MODEL



- Crodarossa Leather Gtx M's
- Crodarossa Leather High Gtx M's
- Crodarossa Leather Gtx W's
- Crodarossa Leather High Gtx W's



DOLOMITE CAREZZA SOLE

ABOUT

Designed for travel, every day use and walking.

Bottom is defined in 3 different areas, where lugs are designed for a specific function: lightness, stability and flexibility. The midsole design, with its sinuous lines highlighting foot anatomy, provides comfort and flexibility.

Crafted with eco-sustainable materials such as recycled eva and rubber compound with recycled powder.

Ergonomics and eco-sustainability are the basis of the sole's design.

BENEFITS:

LIGHTNESS, COMFORT, FLEXIBILITY, ECO-SUSTAINABILITY

1. Multidirectional traction lugs for stability
2. Flexibility area
3. Empty "S" Design increase lightness
4. Eva cushioning for comfort.



RANGE MODEL



- Carezza Knit M's
- Carezza Knit W's



- Carezza Leather M's
- Carezza Leather W's



- Carezza Leather Mid WP M's
- Carezza Leather Mid WP W's





ABOUT

The secret of Vibram® performance is the optimal combination of hyperfunctional DESIGN and exclusive RUBBER COMPOUNDS. For more than 80 years Vibram® has been delivering the most advanced soles to the market. Vibram® soles are known for use in outdoor sports such as mountaineering, hiking, trail running, motorcycling as well as for casual and industrial applications. The Vibram® yellow octagon has become the gold standard of quality and performance throughout the footwear industry.

XS TREK

BENEFITS:

- Optimal balance of traction and durability
- Responsive on unpredictable terrain
- Engineered for stability and comfo

BEST FOR:

- Optimal balance of traction and durability
- Responsive on unpredictable terrain
- Engineered for stability and comfort

MONT

BENEFITS:

- Tested on the world's highest peaks
- Maintains performance at extremely low temperatures
- Firmer compound for maximum support and durability

BEST FOR:

- Extremely long wearing
- Winter sports, mountaineering

MEGAGRIP

BENEFITS:

- Unparalleled grip on wet and dry surfaces
- Superior grip with rugged longevity
- Optimal balance of stability and flexibility for ground adaptation

BEST FOR:

- Wet/slippy technical terrains
- All terrain conditions
- Technical approach, technical path
- Extremely technical trailrunning
- Wet/slippy conditions

ICETREK

BENEFITS:

- Superior grip on icy surfaces and cold terrain
- Engineered for low to very low temperatures
- Rubber compound suitable for indoor/outdoor

BEST FOR:

- Cold/icy conditions
- Winter hiking, rough conditions

ECOSTEP

BENEFITS:

- Made from a minimum of 30% recycled rubber
- High-quality compound formulation
- Embodies Vibram's dedication to environmental conservation

BEST FOR:

- Soft terrains
- Eco-friendly attitude
- Soft terrain trailrunning
- Unique look

VI-LITE

BENEFITS:

- Ultimate in lightness
- Optimum balance of lightness and durability
- Ideal for working on your feet & long walks in the park

BEST FOR:

- Wearable for urban long walk
- Compromise between lightness & durability

ARCTIC GRIP

BENEFITS:

- Unsurpassed on slippery, wet ice surfaces
- Outstanding balance between grip and durability
- Calibrated for extreme cold 32° F/0°C

BEST FOR:

- Travelling
- Light Outdoor Activities & Everyday Wear

NEW ERGONOMIC FOOTBED

ANATOMICAL FOOTBED

The new bi-density footbed provide the right support, improving stability by distributing body weight evenly and keeping the foot in a correct position.

The women's footbeds are designed with an added rear insert to ensure heightened comfort.

Antibacterial surface fabric derived from recycled materials

The upper part is made from soft density foam to offer enhanced comfort. It's made by breathable material, sourced from recycled materials.

Felt with anti-torsion capabilities

Hard density foam in the rear for stability and arch support

PERFORMANCE FOOTBED



LIFESTYLE FOOTBED

The women's footbeds are designed with an added rear insert to ensure heightened comfort.

Antibacterial surface fabric derived from recycled materials

The upper part is made from soft density foam to offer enhanced comfort. It's made by breathable material, sourced from recycled materials.

Hard density foam in the rear for stability and arch support

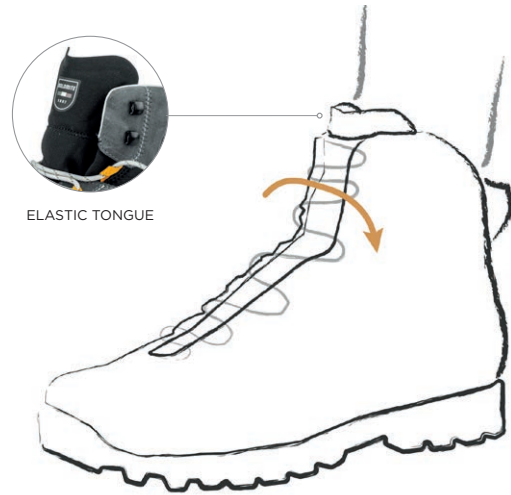


DOLOMITE WRAPPING SYSTEM

The “Dolomite Wrapping System” is an elasticized construction, composed of tongue and collar that wraps comfortably instep and ankle. It improves wearers sense of comfort, protection and precision of movement for the entire duration of the activity.

BENEFITS:

1. Increased comfort levels
2. Improved performance
3. Improved precision of movement



GORE-TEX WITH ePE MEMBRANE



The new GORE-TEX products based on ePE (expanded polyethylene) membranes offer trusted best-in-class performance and durability with a low environmental footprint.

So when you wear a footwear that contains this tech, you know you are choosing to reduce your footprint with the same waterproof, windproof and breathable guarantee

PERFORMANCE

- Durably waterproof
- Reliably breathable
- Totally windproof
- GUARANTEED TO KEEP YOU DRY

PRIMALOFT® GOLD INSULATION P.U.R.E.™



PrimaLoft® Gold Insulation P.U.R.E.™ offers best-in-class insulation designed for repeated compression and durability over time. Its water repellent, high-density construction maintains thickness and continues to deliver excellent warmth under compression and in wet conditions.

P.U.R.E.™ which stands for “Produced Using Reduced Emissions” is a breakthrough renewable manufacturing technology that uses a proprietary technique to reduce carbon emissions by up to 70% compared to traditional production methods.



DAS is the construction system used to produce most of the models in the Dolomite collection.

Its aim is to ensure that the internal shape of the footwear follows the anatomy of the foot itself as closely as possible, and to comply with the natural biomechanics of the foot.

By keeping the impact of footstrike to a minimum and facilitating natural movements, extraordinary levels of comfort and safety can be achieved.

DAS shoes are designed to meet the demands of different sporting activities, carefully balancing **performance, comfort, lightness, reliability and sturdiness**.

The system comprises:

ANATOMICAL LAST

The surfaces and volumes of DAS lasts reproduce the anatomy of the average human foot, creating a precision fit and superior comfort.



TRADITIONAL LAST



DAS LAST

ANATOMICAL FOOTBED

The removable footbed provide the right support, improving stability by distributing body weight evenly and keeping the foot in a correct position.



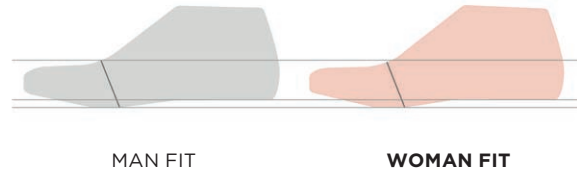




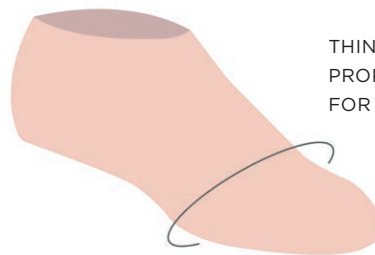
WOMAN FIT



Dolomite's anatomical and traditional lasts are the result of years of experience in the footwear business. They are constantly updated to keep pace with evolving trends in outdoor activities and with consumer demand.



The anatomy of women's foot differs from the men's one, in terms of sizes and sensitivity. This led us to develop a dedicated anatomical last specifically thought and designed for women's feet, to offer the best feeling possible to every Dolomite wearer.



THINNER FOREFOOT
PROPORTIONS
FOR IMPROVED COMFORT.

P O S





 **DOLOMITE**

247997 DESK BOX

MATERIAL: Wood

SIZE: 60xh21x35 cm



9999 No col.

TWO-WAYS USE:



Vertical



Horizontal

267986 DOL LOGO SIGN PLUS

MATERIAL: Wood
SIZE: 30xh15x2,8 cm



9999 No col.

TWO-WAYS USE:



Vertical



Horizontal

270613 DOL LOGO SIGN SMALL

MATERIAL: Wood
SIZE: 15xh6x2 cm



9999 No col.

278444 GONDOLA

SIZE: W 140x D 60x H 160cm



UPON REQUEST FRAME

MATERIAL: Technical aluminium profile

SIZE 1: 2,30x1,40 m

SIZE 2: 1,80x0,80m

UPON REQUEST GRAPHIC

MATERIAL: Polyester

SIZE 1: 2,30x1,40 m

SIZE 2: 1,80x0,80m



267640 HANGER JACKET PACK-5

MATERIAL: Vintage Wood



1074 Vintage wood

267642 HANGER PANT PACK-5

MATERIAL: Vintage Wood



1074 Vintage wood

424540 STICKER DIE-CUT PAK-2

MATERIAL: PVC

SIZE: 40x18 cm



0178 Blue/White

286042 DOL SHOE DISPLAY

MATERIAL: Vintage Wood, metal

SIZE: 26x48x20 cm



292377 RE-SOURCE SHOE DISPLAY MAGNET

MATERIAL: Vintage Wood, metal

SIZE: 25,6x44,6 cm

Will be available in EN/DE/IT/FR



292376 RE-SOURCE WINDOW DISPLAY

MATERIAL: Paper

SIZE: 29x42 cm

Will be available in EN/DE/IT/FR



297168 PENCIL BOX PAK-4

MATERIAL: Wood

DETAIL: Made with Vaia storm-felled trees



9999 No col.

273566 PEN PAK-50

MATERIAL: Non-toxic ABS Plastic



0158 Blue

273567 USB STICK 4GB PAK-10

MATERIAL: Plastic, rubber, metal



0158 Blue

273568 NOTEBOOK PAK-24

SIZE: 17,8x25,1cm



0158 Blue

267434 TROLLEY SHOES

MATERIAL: Polyester

SIZE: 90x32x28cm



0158 Blue

267435 SUITCASE FOR CLOTHING

MATERIAL: Polyester



0158 Blue

267809 SHOP BEACH FLAG

MATERIAL: Polyester

SIZE: 180 cm



0158 Blue

270893 DOL DOORMAT 58X96CM

MATERIAL: PVC
SIZE: 58x96 cm



0158 Blue

268406 SHOPPING BAG MEDIUM PAK-150

MATERIAL: Paper
SIZE: 36xh40x12 cm



9999 No col.

268407 SHOPPING BAG BIG PAK-125

MATERIAL: Paper
SIZE: 54xh49x15 cm



9999 No col.

419559 STRENTA W'S TEE

TECHNOLOGIES: Cotton single jersey

COMPOSITION: 100% Cotton

SIZE: XS, S, M, L, XL, XXL

FIT: Regular

FEATURES:

- > Dolomite chest print
- > Rib collar



1405 Wood Blue



1556 Gallo Brown



1560 Mineral Green



1559 Stone Blue

419550 STRENTA M'S TEE

TECHNOLOGIES: Cotton single jersey

COMPOSITION: 100% Cotton

SIZE: XXXL, S, M, L, XL, XXL

FIT: Regular

FEATURES:

- > Neck tape
- > Dolomite chest print



0119 Black



0748 White



1405 Wood Blue



1560 Mineral Green



1625 Electric Blue





FOOTWEAR
LINE-UP



NEW Nibelia Saxifraga 2.0 High
Art. 424134



0921 Stone Grey

NEW Nibelia Saxifraga 2.0 Warm
Art. 424131



0921 Stone Grey

NEW Nibelia Warm High WP W's
Art. 423889



0119 Black



1668 Ivory Beige/Black

NEW Nibelia Warm High WP M's
Art. 423888



0119 Black



1667 Dark Green/Black

Nibelia Warm W's
Art. 421123



0124 Black/Black



1606 Mauve Pink



1670 Goat Beige/Black

NEW

Nibelia Warm M's
Art. 421122



0124 Black/Black



1608 Legion Blue



0878 Olive Green

NEW

Nibelia High GTX W's
Art. 420073



1572 Goat Beige



1575 Black/Mint Green



1612 Silver Green/Sand Pink



0924 Denim Blue

Nibelia High GTX M's
Art. 420072



0119 Black



0878 Olive Green



1654 Mud Green/Black



1655 Night Blue/Mustard Yellow

Nibelia GTX W's
Art. 420071



0539 Mint Green



1584 Black/Lilac Grey



1612 Silver Green/Sand Pink



0924 Denim Blue

Nibelia GTX M's
Art. 420070



0119 Black



0878 Olive Green



1654 Mud Green/Black



1655 Night Blue/Mustard Yellow

Vernale Leather High GTX W's
Art. 422795



0119 Black



0300 Dark Brown



1657 Anthracite Grey/Coral Red



1612 Silver Green/Sand Pink

Vernale Leather High GTX M's
Art. 422794



0119 Black



0300 Dark Brown



0937 Anthracite Grey



1656 Deep Green/
Electric Orange

Vernale High GTX W's
Art. 422797



1644 Storm Blue

1605 Gunmetal Grey/
Black

Vernale High GTX M's
Art. 422796



1658 Night Green/
Black

1659 Black/Anthracite
Grey

1655 Night Blue/
Mustard Yellow

Tamaskan 2.0
Art. 418186



0119 Black

Tamaskan 2.0 W's
Art. 417049



1526 Foggy White/Black

54 Hike Low Evo GTX W's
Art. 289210



1076 Gunmetal Grey

1518 Paprika Red

1341 Dusty Purple

54 Hike Low Evo GTX M's
Art. 289208



1076 Gunmetal Grey

0922 Golden Yellow

0878 Olive Green

54 Hike Evo GTX W's
Art. 289209



1076 Gunmetal Grey

1518 Paprika Red

1341 Dusty Purple

54 Hike Evo GTX M's
Art. 289207



1076 Gunmetal Grey

0922 Golden Yellow

0878 Olive Green

Croдарossa Leather High GTX W's
Art. 421121



0924 Denim Blue 0848 Taupe Beige

Croдарossa Leather High GTX M's
Art. 421120



1607 Iron Grey/Black 1608 Legion Blue 0193 Brown

Croдарossa Leather GTX W's
Art. 420067



0924 Denim Blue 1573 Ice Grey

Croдарossa Leather GTX M's
Art. 420066



1425 Silver Green/Lime Green 1578 Iron Grey

Croдарossa Hi GTX 2.0 W's
Art. 421129



0924 Denim Blue

Croдарossa Hi GTX 2.0 M's
Art. 421128



1520 Storm Grey/Burnt Orange

NEW Carezza Nabuk Mid Lt W's
Art. 423916

re source



0922 Golden Yellow



0119 Black

NEW Carezza Nabuk Mid Lt M's
Art. 423914

re source



0922 Golden Yellow



0119 Black

Carezza Leather Mid WP W's
Art. 421119

re source



0193 Brown



1472 Silver Green



1325 Aluminium Grey

NEW

Carezza Leather Mid WP M's
Art. 421118

re source



1519 Sepia Brown



1028 Thyme Green



0928 Chocolate Brown

NEW

NEW Carezza Leather WP W's
Art. 424408

re source



0158 Blue



0848 Taupe Beige



1325 Aluminium Grey



1640 Iceberg Green

NEW Carezza Leather WP M's
Art. 424407

re source



0160 Blue Navy



1076 Gunmetal Grey



1658 Night Green/Black



1444 Atlantic Blue

Carezza Leather W's
Art. 420085

re source



0086 Beige



1392 Nude Pink

1444 Atlantic Blue

re source



0922 Golden Yellow



1519 Sepia Brown



1028 Thyme Green

NEW 54 High Dust GTX
Art. 424962



0924 Denim Blue 1076 Gunmetal Grey 1190 Autumn Brown 1347 Sage Green 1519 Sepia Brown 1642 Bone White

NEW 54 Warm Evo WP W's
Art. 423901 re source



1325 Aluminium Grey 1398 Pinecone Brown 0119 Black

NEW 54 Warm Evo WP M's
Art. 423900 re source



0160 Blue Navy 1398 Pinecone Brown 0922 Golden Yellow

54 High Fg Evo Gtx W's
Art. 292533 re source



0848 Taupe Beige 0193 Brown 1325 Aluminium Grey 1378 Oak Brown 1076 Gunmetal Grey 1665 Rosewood Brown

54 High Fg Evo GTX
Art. 292529 re source



0119 Black 0160 Blue Navy 0300 Dark Brown 1347 Sage Green 0922 Golden Yellow



1605 Gunmetal Grey/Black 1519 Sepia Brown 1608 Legion Blue 1665 Rosewood Brown

54 Mid Fg Evo **re source**
Art. 292531



0119 Black



1605 Gunmetal Grey/Black



0300 Dark Brown



0922 Golden Yellow

54 Low Fg Evo Gtx W's **re source**
Art. 292534



0848 Taupe Beige



0193 Brown



1325 Aluminium Grey



1378 Oak Brown



1076 Gunmetal Grey



1665 Rosewood Brown

54 Low Fg Evo Gtx **re source**
Art. 292530



0119 Black



0160 Blue Navy



0300 Dark Brown



1347 Sage Green



0922 Golden Yellow



1605 Gunmetal Grey/Black



1519 Sepia Brown



1608 Legion Blue



1665 Rosewood Brown

NEW 54 Low Evo Lt **re source**
Art. 423965



1197 Dark Blue



1212 Otter Brown



1181 Pewter Grey



1519 Sepia Brown

NEW 54 Low Evo GTX W's
Art. 423964 re source



1076 Gunmetal Grey



1231 Nugget Brown

NEW 54 Low Evo GTX
Art. 423963 re source



0226 Avio



0922 Golden Yellow



0928 Chocolate Brown

54 Low Evo W's
Art. 289211 re source



1347 Sage Green



1643 Cork Brown



0158 Blue



0300 Dark Brown



1076 Gunmetal Grey



0386 Grey

54 Low Evo
Art. 289205 re source



1028 Thyme Green



0821 Gunmetal Grey/
Canapa Beige



0300 Dark Brown




0172 Blue/Cord



1605 Gunmetal Grey/Black



0158 Blue

54 La Classica
Art. 248730 



0119 Black




0713 Testa Moro



0300 Dark Brown



0926 Ochre Red

54 La Classica Lh
Art. 262940 

SALES NETWORK

ARMENIA

Outdoor Center Yerevan
Yerevan 0005
Tel. +374 44 884800
info@camp.am

DENMARK

SCOTT Sports Denmark A/S
8660 Skanderborg
Tel.: +45 44 220 120
denmark@scott-sports.com

ICELAND

Kraftey EHF
113 Reykjavik
Tel.: +354 8491488
hilmar@kraftey.is

SOUTH KOREA

Pilz International Ltd.
Seoul, Republic of Korea (06256)
Tel. +82 02 552 8680
pilzco@pilzsports.co.kr

AUSTRALIA

The Sport Mechanics Pty Ltd
3192 Cheltenham
Tel. +61 395815400
symon@sportmechanics.com.au

FRANCE

SCOTT Sports SA
Succursale France
74940 Annecy le Vieux
Tel.: +33 450 64 24 00
outdoor@scott-sports.com

LEBANON

I.M.CO Line Int'l SARL
Keservan
Tel.: +961 9 958 6 25
anthonella@maisonduski.com

SPAIN, PORTUGAL, ANDORRA

BM Sportech
50197 Zaragoza
Tel.: +34 876 269100
info@bmsportech.es

AUSTRIA

SCOTT Sports AG
Niederlassung Oesterreich
6020 Innsbruck
Tel.: +43 512 34 35 31
austria@SCOTT-sports.at

GERMANY

SCOTT Sports AG
Niederlassung Deutschland
85748 Garching/Hochbruck
Tel.: +49 89 8987836 0
SCOTT-de@SCOTT-sports.de

NETHERLANDS

SCOTT Sports NL
4251 LP Werkendam
Tel. +31 183788137
Info.nl@SCOTT-benelux.com

SWEDEN

SCOTT Sports AB
S-752 28 Uppsala
Tel.: +46-18-562800
info@SCOTT-sports.se

BELGIUM & LUXEMBOURG

SCOTT Sportech Benelux
3070 Kortenberg
Tel.: +32 2 755 93 20
info@SCOTT-benelux.com

HONG KONG

Swire Resources
Kowloon Bay, Hong Kong
Tel: +852 2310 6547
idyho@swire-resources.com

NEW ZEALAND

Colorado Traders Ltd.
Wellington
Tel.: +64 4 473 6459
sales@colorado-traders.co.nz

SWITZERLAND

SCOTT Sports SA
Niederlassung Schweiz
1762 Givisiez
Tel.: +41 26 460 16 99
switzerland@scott-sports.com

BULGARIA

Maxsport 2000 Ltd.
1142 Sofia
Tel.: +359 2 980 9401
petkova@maxsport-bg.com

GREECE

Unigreen S.A.
Avlon, Attica
Tel. +30 2295029977
info@unigreen.gr

NORWAY

Ruco Scandinavia
2624 Lillehammer
Tel.: +47 61 26 20 00
post@ruco.no

TURKEY

And Outdoor
Avcilar, Istanbul
Tel: +90 212 590 3838
info@andoutdoor.com

CANADA

Mica Sport Canada Inc.
Bracebridge, ON PILIP8
Tel.: +1 705 646 2462
mica@micasport.com

JAPAN

CARAVAN CO. Ltd
TOKYO, 170-0002
Tel.: +81-3-3944-2460
nakamura@caravan-nature.co.jp

POLAND

SAT TS sp. z o.o.
Poznan
Tel.: +48 61 865 50 50
sat@sat.poznan.pl

UNITED KINGDOM & IRELAND

SCOTT Sports SA
Branch United Kingdom
Cramlington, NE23 1WL
Tel.: +44 1670 712 129
info@SCOTT-sports.co.uk

CROATIA, SLOVENIA

Britton Sport
10000 Zagreb
Croatia
Tel: +385 1 4875 694
rogic@brittonsport.com

KYRGYZSTAN

Alexandr Belousov
720005 Bishkek
belousov.alex@mail.ru

ROMANIA

SC Suma Sport Srl
Brasov 500432
Tel.: +40 368 415631
office1@spyder.com.ro

USA

SCOTT USA, Inc.
Salt Lake City, UT 84109
Tel.: +1 800 292 5874
info@SCOTTusa.com

CZECK REPUBLIC, SLOVAKIA

Sport Port S.R.O.
251 01 Říčany
Tel.: +420 778 526 444
sportport@sportport.cz

ITALY

SCOTT Italia Srl
24021 Albino (Bergamo)
Tel.: +39 035 756 116
customerservice@SCOTT-sports.it

SERBIA

Outdoor Sports d.o.o.
11000 Belgrade
Tel.: +381 11 40 60 795
office@outdoorsports.rs



info@dolomite.it - dolomite.it